

Family and Household Well-Being During the Last Two Decades – what can existing data tell us?

Andrew Sporle¹, Gabrielle Jenkin², Sue Milligan²,
Assoc-Prof. Charles Crothers³, Pat Coope², Prof.
Peter Davis², Dr. Tony Blakely⁴, Prof. Alastair Scott¹.

¹Statistics, Auckland University; ²Public Health and General Practice, Chch School of Medicine and Health Sciences, University of Otago; ³Social Sciences, Auckland University of Technology; ⁴Public Health, Wellington School of Medicine and Health Sciences, University of Otago.



The Project

- 4 year quantitative social research project
- Funded from FRST
- Uses existing data from multiple sources
- Multidisciplinary
 - Sociology
 - Public Health (epidemiology)
 - Statistics
- Aim to develop new method of social research and social outcome monitoring



What we want to do

Objectives

- develop standard measures of household / family composition, socio-economic status and wellbeing
- examine factors contributing to family wellbeing
- examine interaction between ethnicity and SES
- Look at **intra** and **inter** generational changes in SES and wellbeing
- feasibility of data linkage and routine monitoring

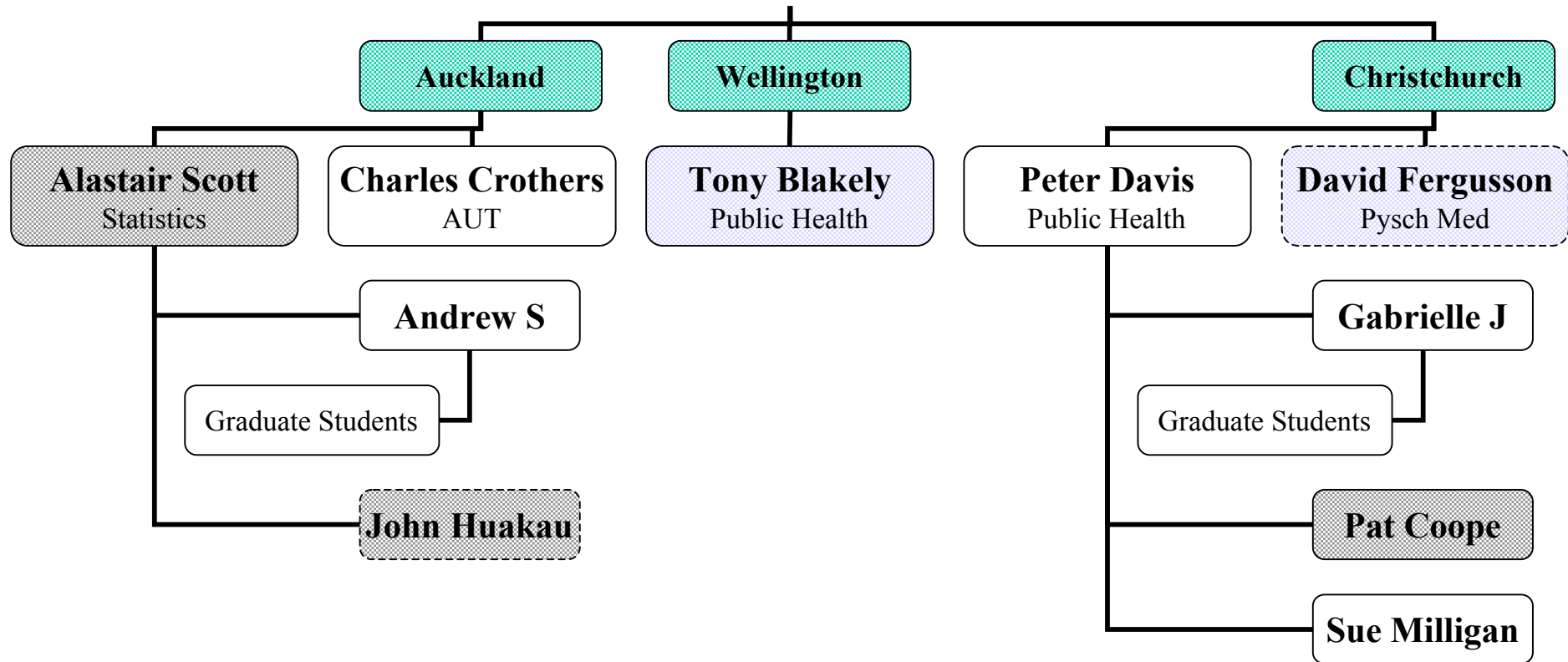


Project Origins

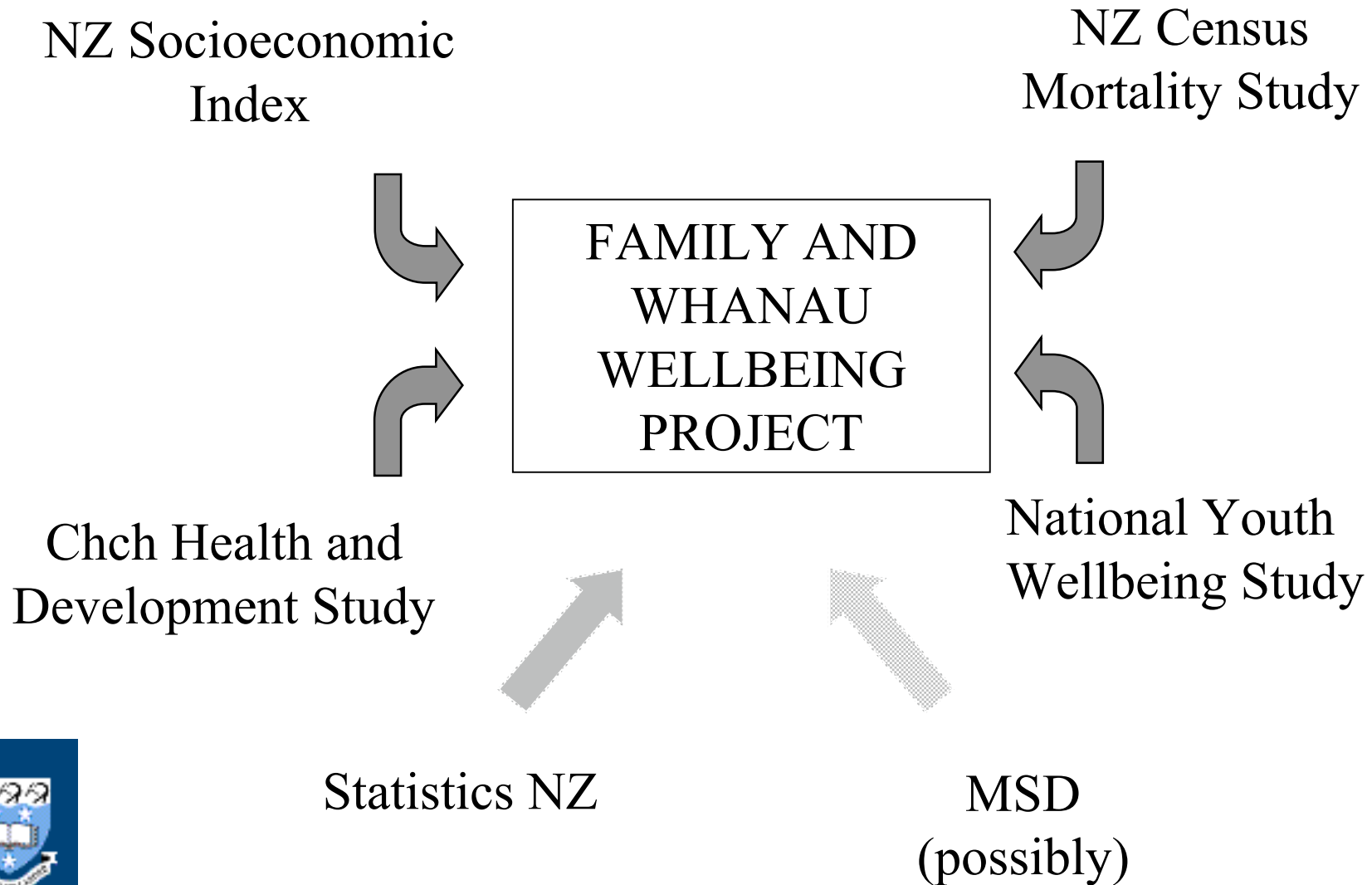
- **Social Epidemiology**
 - Life course determinants of wellbeing
 - Development of statistical methods
- **Social Indicator Work**
 - SES indicators applicable to adult or areas
 - Need for indicators for children or households
- **Social Program Evaluation**
 - Family focused policies
 - Limited measures
 - Limited methods - especially with routine data



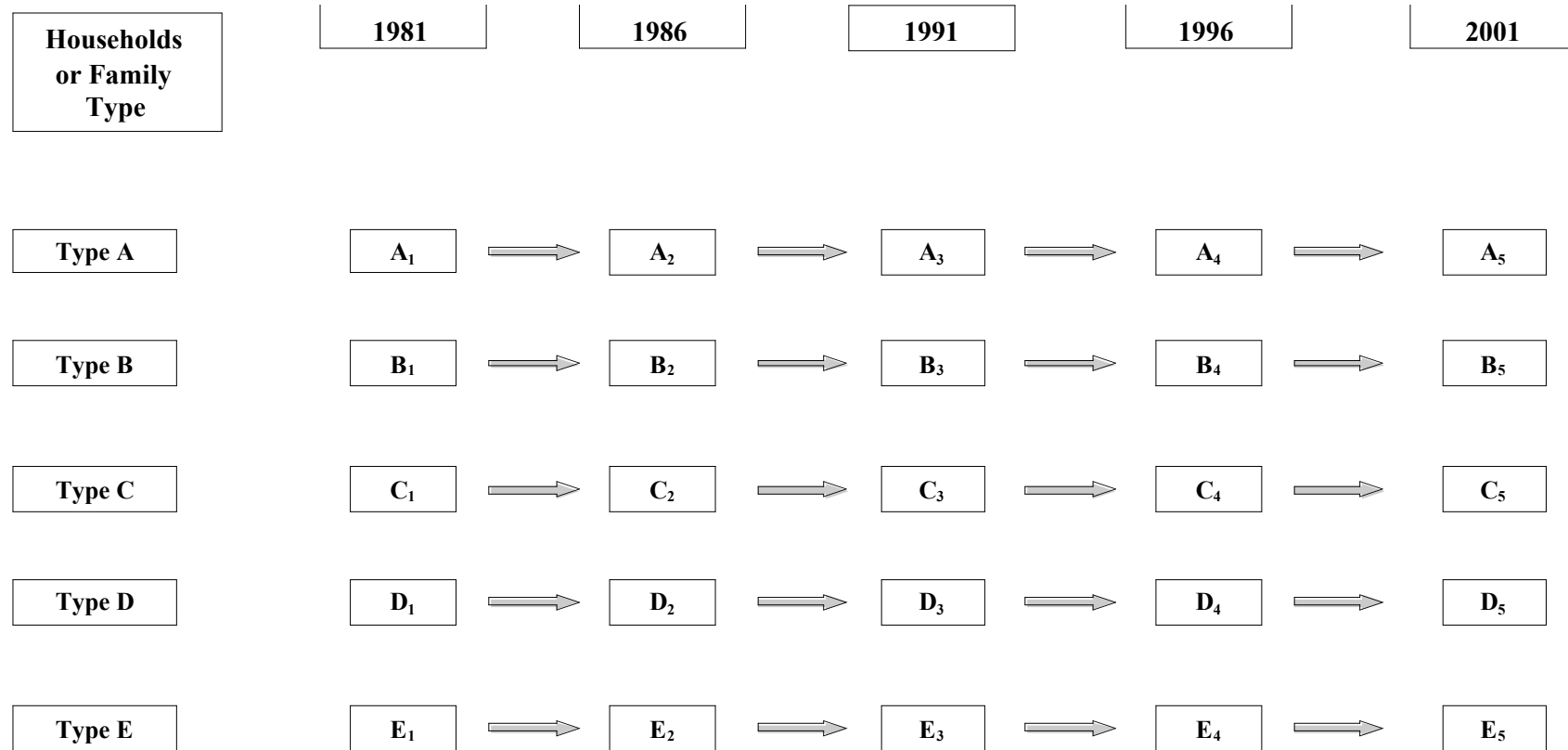
Research Team



Project Links



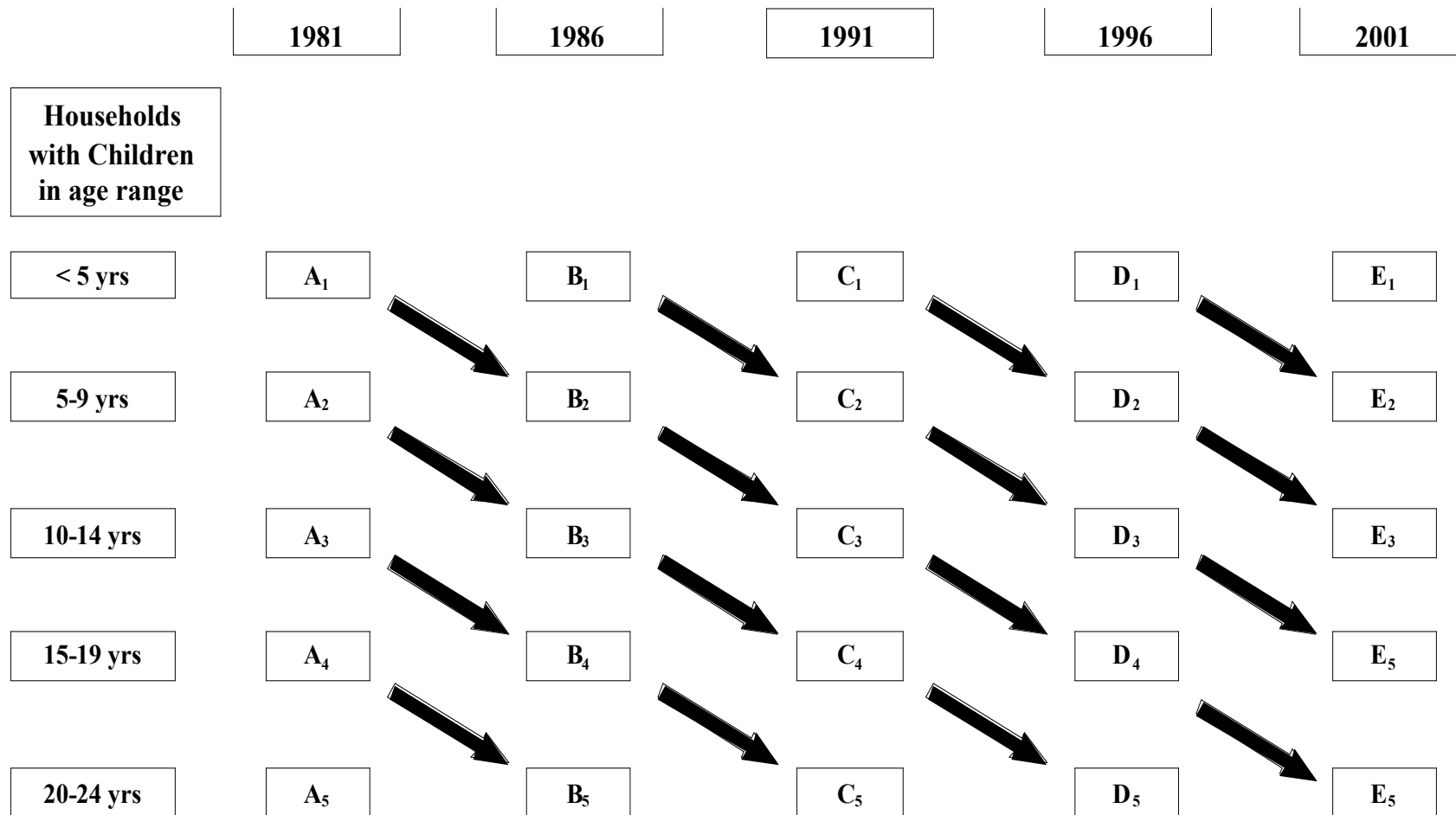
Time Series



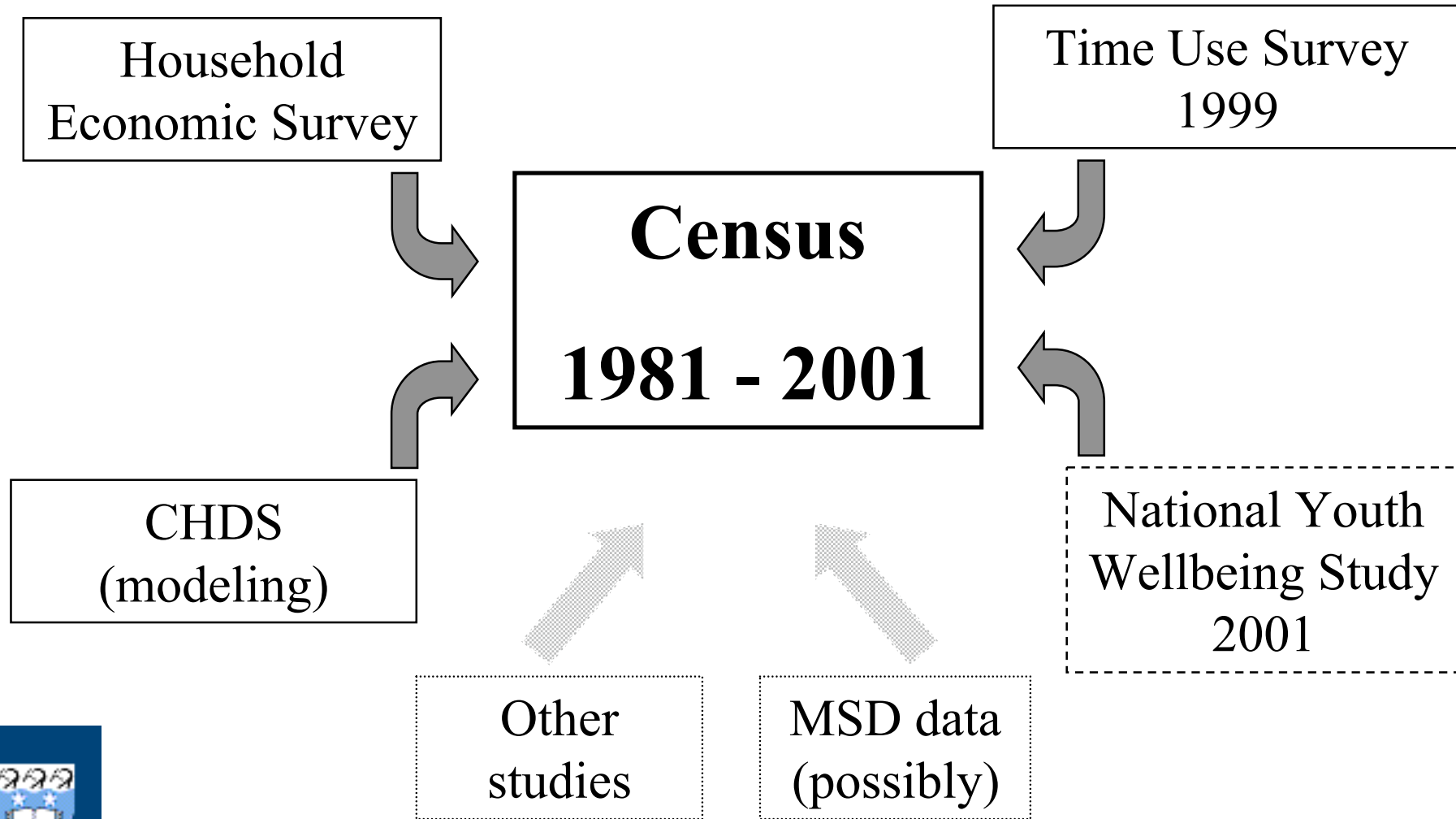
Changing distributions of outcomes for household or family type



Synthetic Cohort



Data Sources



Issues with Existing Data

Inclusiveness of surveys

- Is the data available?

Consistency of definitions

- Between data sets
- Across time

Focus of the data

- Households
- Families



Change in Personal Census Q'aire

Topic	'81	'86	'91	'96	'01
Age
Children born	.			Δ	
Cigarette smoking	.			Δ	
Country of birth
Education	.	Δ	Δ	Δ	.
Employment status	.	Δ	Δ	Δ	.
Ethnicity	.	Δ	Δ	Δ	Δ
Hours worked	.	Δ	Δ	Δ	.
Income	.	Δ	.	Δ	.
Industry	.	.	.	Δ	.
Living Arrangements		.	Δ	Δ	Δ

. Data available
 Δ Coding changes

Based on Morrison P (1991)



Change in Personal Census Q'aire

Topic	'81	'86	'91	'96	'01
Looking for work	.	Δ	Δ	.	.
Marital status	.	Δ	Δ	Δ	.
Means of travel to work	.	Δ	Δ	.	.
Non-labour force status	.	Δ	Δ	Δ	.
Occupation	.	Δ	.	Δ	.
Relationship to Occupier	.	Δ	.	Δ	.
Sex
Social Welfare Payments	.	.	.	Δ	.
Voluntary work		.	Δ	Δ	Δ
Years lived in NZ	.	.		Δ	Δ
Years at usual address	

. Data available

Δ Coding changes

Based on Morrison P (1991)



Family Definition Changes

Definition	'81	'86	'91	'96	'01
First Family	.	.			
Second Family	.	.			
Third Family	.	.			
Person alone	.	.			
1 parent			.	Δ	Δ
2 parent			.	Δ	Δ
Couple only			.	Δ	Δ
Non Family unit			.	Δ	Δ
'One person economic family'				.	
Couple economic family				.	

. Data available

Δ Coding changes



The Problem(s) of Income

Total income by employment status



Summary of SES Indices

Index	'81	'86	'91	'96	'01
Elley-Irving (Occupational)	. #	. #			
NZSEI (Occupational)			. \$	Δ%	. %
NZDep (Small Area)			.	Δ	Δ
School Decile (Large Area)				.	Δ@
Non-Occupational Classification					. *
ELSI (Individual Living Standards)					. *

. Data available

Δ Changes in Index

Based on 1976 data

\$ 1996 index uses 1991 data

% 2002 index uses 1996 data

@ 2002 revision (applied in 2003) uses 2001 data

* Not completely applicable to routine data



Strengthening Families (1999) Outcome Measures in the Census

Outcome	Indicator (% children)	81	86	91	96	01
Family Circumstances	<18 living with 1 parent	.	△	△	△	△
Benefit Receipt	<18 with parent on benefit	.	△	△	△	△
Long term B.R.	children <10 who spent $\geq 3/5$ yrs with parent on benefit					
Paid Work Status	<15 living with parent without paid work	.	△	△	△	△
Low Income	with equiv. family income in lowest two quintiles by family type/ethnicity	.	△	△	△	△
Housing Circumstances	Shared housing
	Overcrowding
Household Food Security	Afford to eat properly, run out of food, cut back on food, use food banks, grants					
Education	Dependent, < 18, not employed F/T with resident parent with no formal quals.	.	△	△	△	△



Households or Families

- Households are focus of Census and HES
- Families are only those families within ONE household
 - ? Families across multiple households
 - ? Mobile families
 - ? Shared custody sole parents

No way to resolve this issue without new data



Summary

- O.K. information on households if HES used
- Changes across time are 'problematic'
- Family information limited to only single household families
- ? whanau



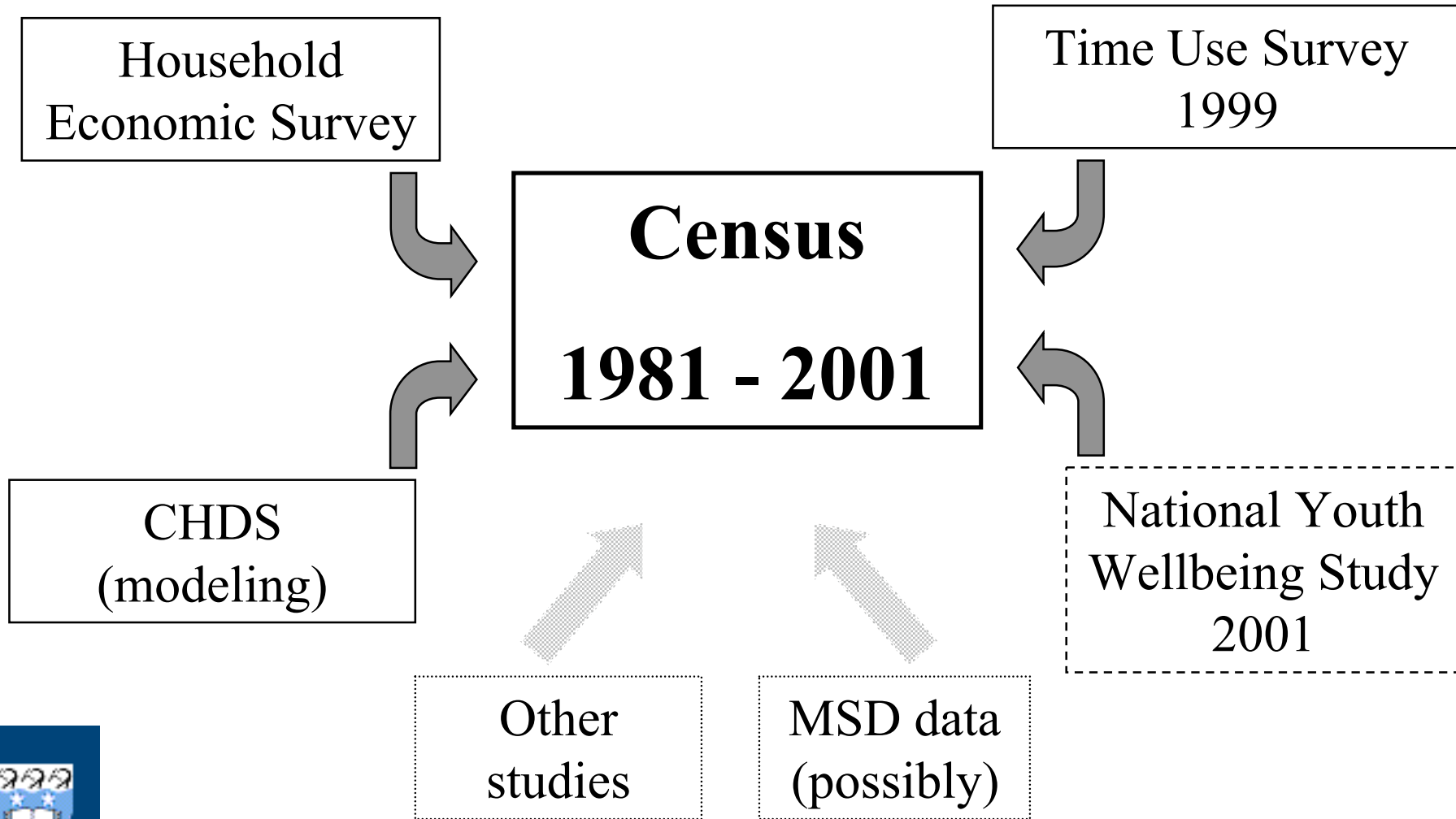
Where to from here?

Possible Options

- **Census to include family focused questions**
 - Issues: compliance, cost, frequency, comprehensiveness
- **HES to include family focused questions.**
 - Issues: sample size and cost
- **Access to anonymised benefit data.**
 - Issues: confidentiality, cost, coverage
- **New child / family focused survey.**
 - COST, frequency
- **Return to universal family benefit.**
 - benefit data used in UK family studies



Data Integration Platform



Data Integration Platform

	Variables																	
Dataset	A	B	C	D	E	F	G	H	I	J	K	L	M	N	O	P	Q	R
Census	
Other

. Data available



Matched Response Profiles

	Variable values								
Response Profile	A (1-2)	B (1-3)	C (a-d)	D (1-2)	E (1-2)	G (1-3)	M (m, f)	P (M,P,A,O)	Mean value of R (S.E.)
1	1	1	a	1	1	1	m	M	2.4 (0.5)
2	2	1	a	1	1	1	m	M	2.0 (0.5)
3	1	2	a	1	1	1	m	M	5.0 (0.8)
4	1	3	a	1	1	1	m	M	2.9 (0.2)
5	2	2	a	1	1	1	m	M	3.0 (0.4)
6	2	3	a	1	1	1	m	M	2.3 (0.4)
7	1	1	b	1	1	1	m	M	2.6 (0.8)
8	1	1	b	1	1	1	m	M	2.9 (0.3)



Further information

Gabrielle Jenkin

gabrielle.jenkin@chmeds.ac.nz

Andrew Sporle

andrew.sporle@auckland.ac.nz

Website available soon via Dept of Public Health and
General Practice pages on

www.chmeds.ac.nz

