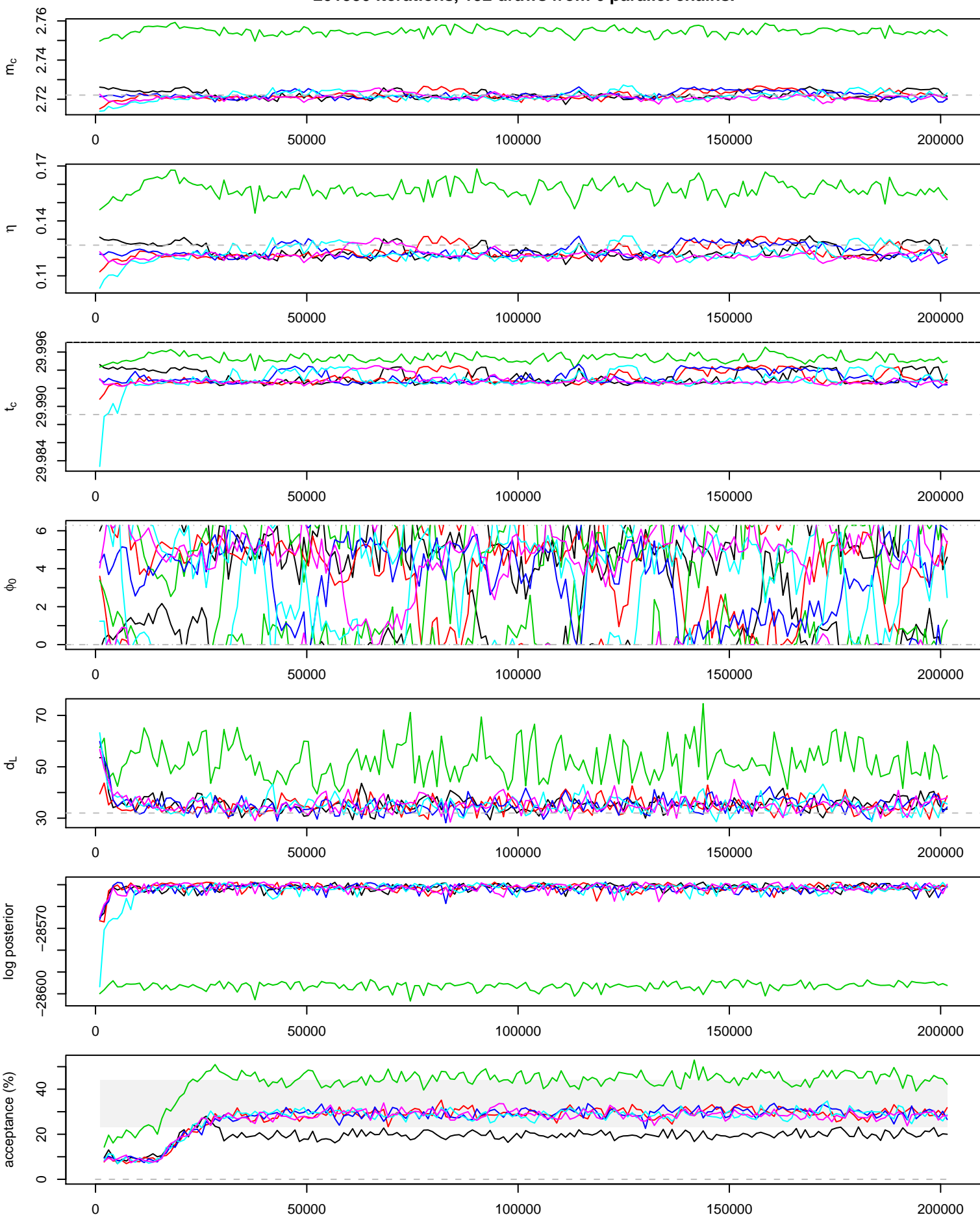
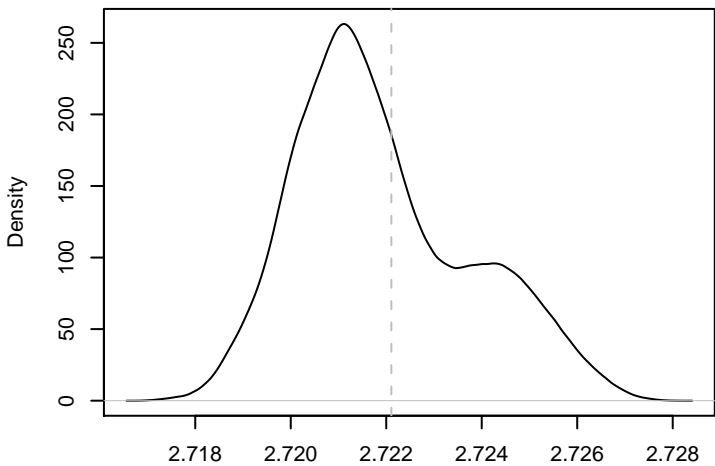
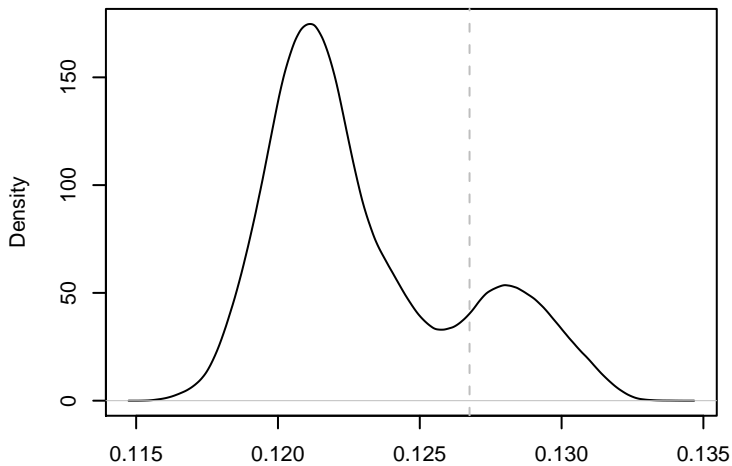


201550 iterations, 192 draws from 6 parallel chains.

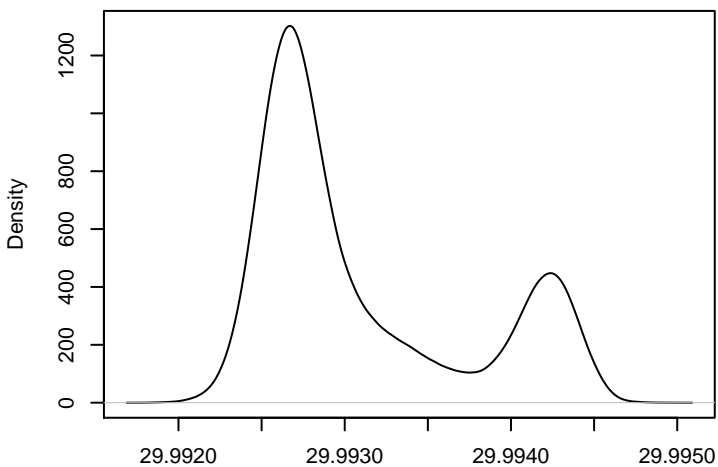


m_c 

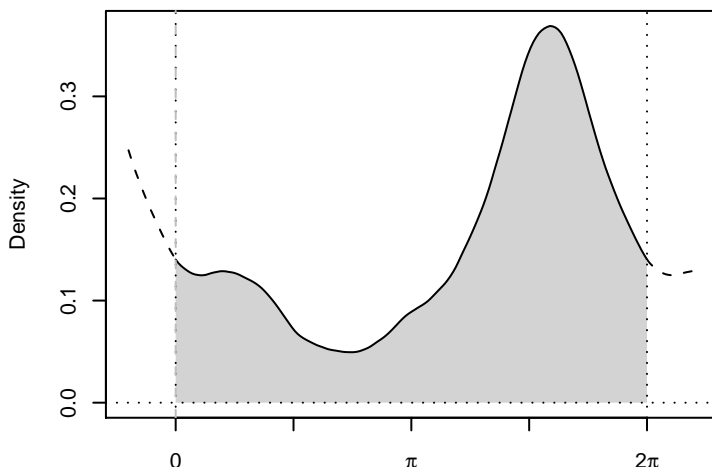
N = 17165 Bandwidth = 0.0002361

 η 

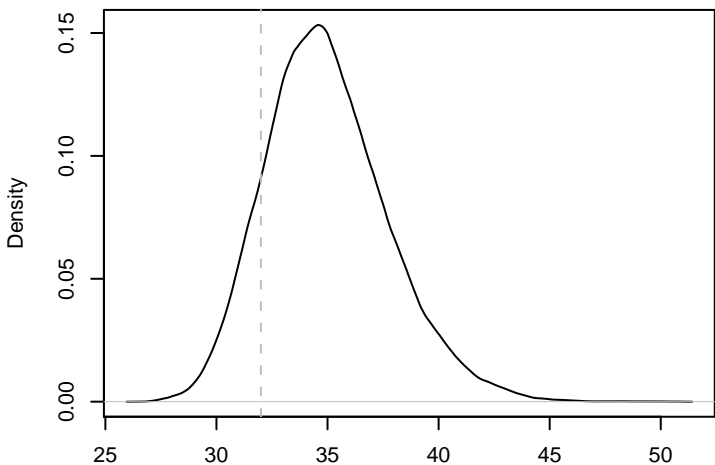
N = 17165 Bandwidth = 0.000437

 t_c 

N = 17165 Bandwidth = 8.162e-05

 ϕ_0 

N = 17165 bandwidth = 0.1593 kernel = epanechnikov

 d_L 

N = 17165 Bandwidth = 0.3433

true parameters:

 $m_c = 2.722$ $\eta = 0.1268$ $t_c = 700000330$ $\phi_0 = 0$ $d_L = 32$

Every 50th out of
iterations 30000 to 201600
from 5 parallel chain(s)
(17165 samples).
Acceptance rate: 27.2%

