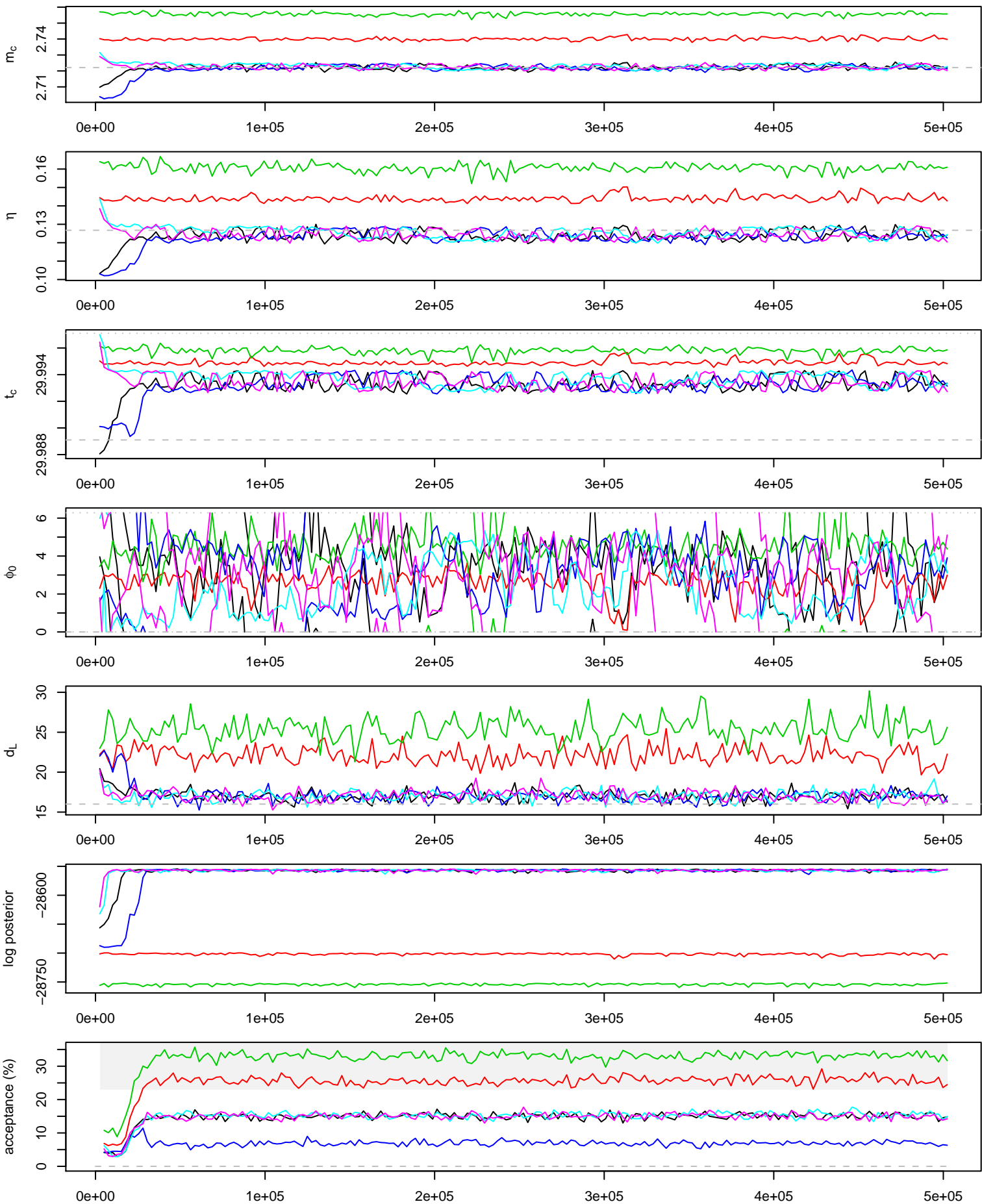
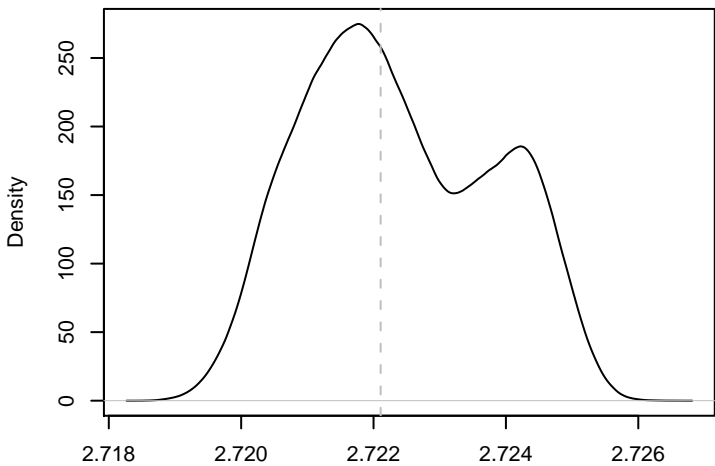
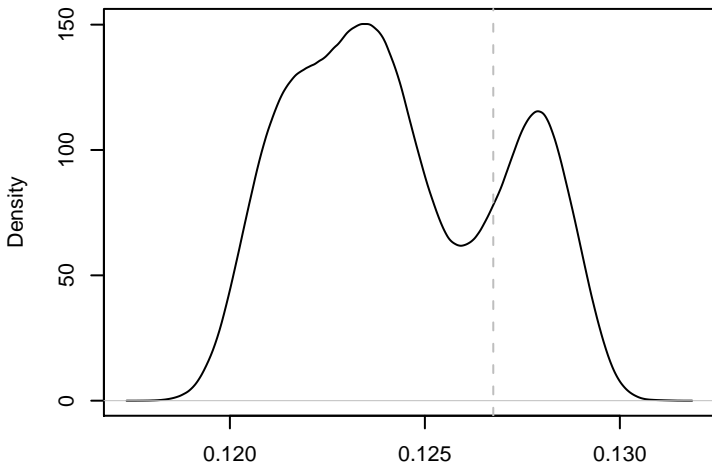


502300 iterations, 197 draws from 6 parallel chains.

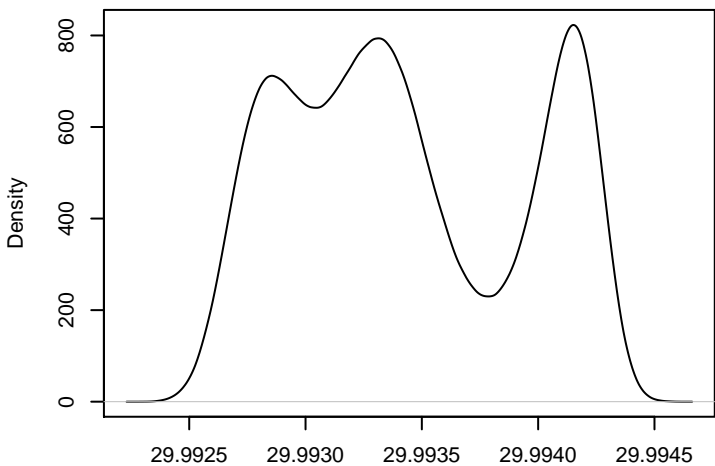


m_c 

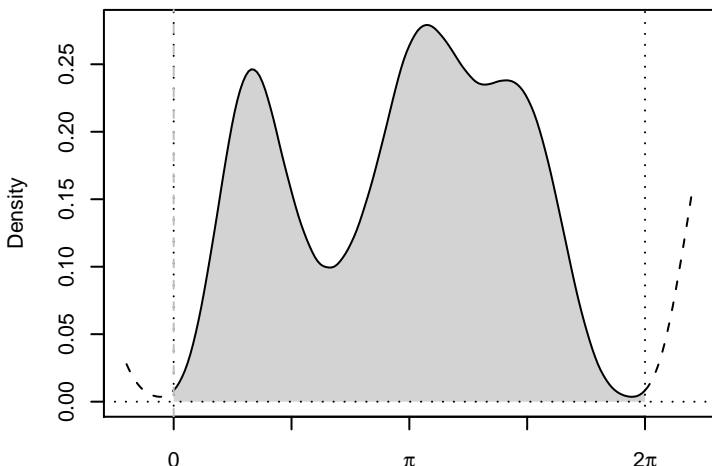
N = 37976 Bandwidth = 0.0001558

 η 

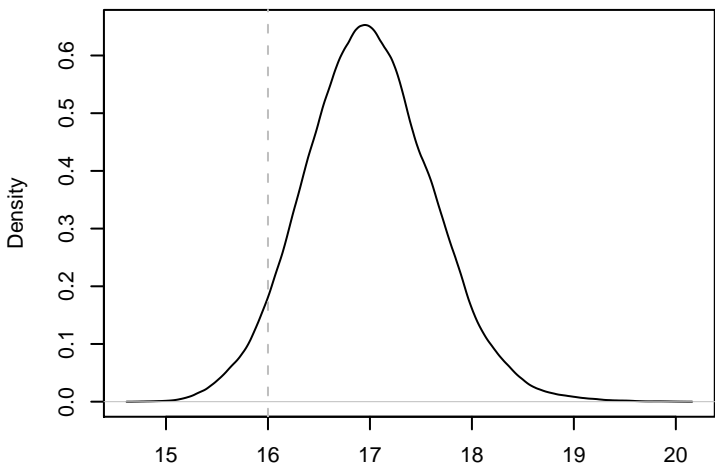
N = 37976 Bandwidth = 0.0002898

 t_c 

N = 37976 Bandwidth = 5.589e-05

 ϕ_0 

N = 37976 bandwidth = 0.1571 kernel = epanechnikov

 d_L 

N = 37976 Bandwidth = 0.06752

true parameters:

 $m_c = 2.722$ $\eta = 0.1268$ $t_c = 700000330$ $\phi_0 = 0$ $d_L = 16$

Every 50th out of
iterations 30000 to 504650
from 4 parallel chain(s)
(37976 samples).
Acceptance rate: 13.1%

