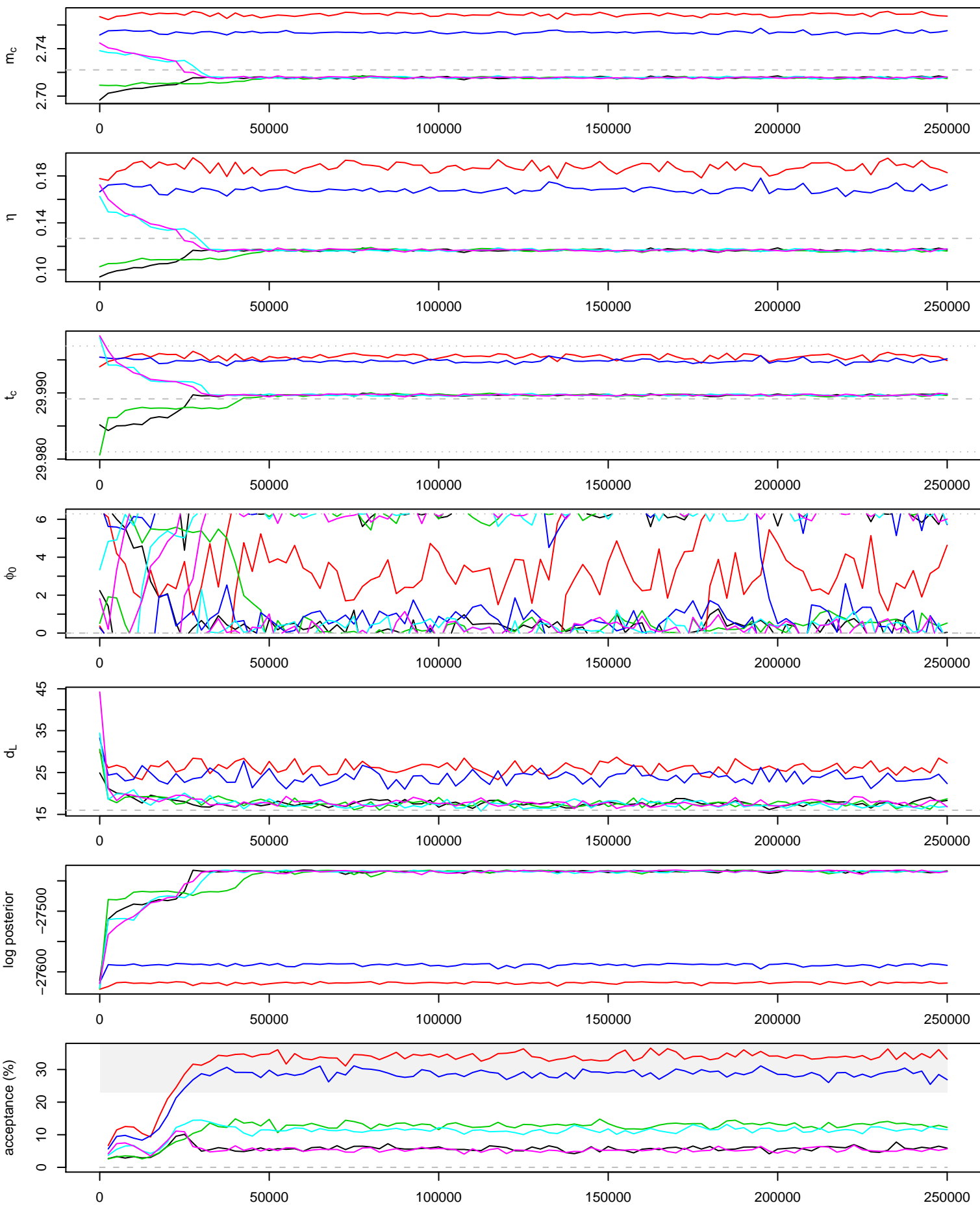
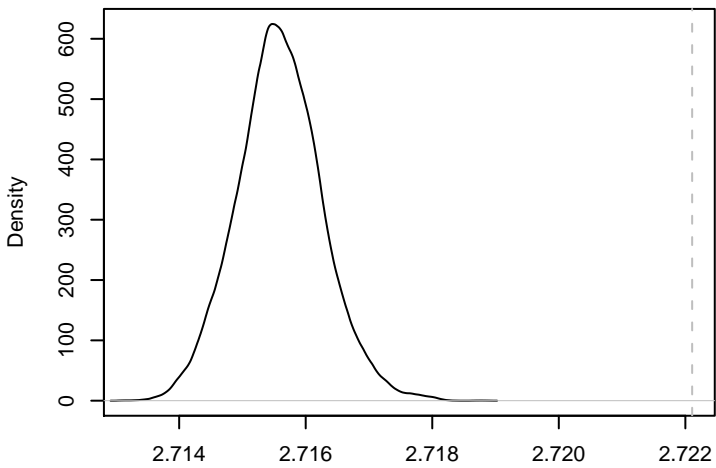
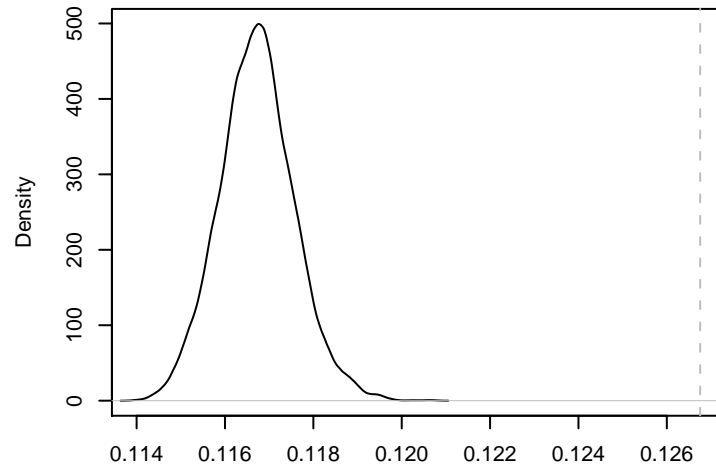


## 250000 iterations, 101 draws from 6 parallel chains.

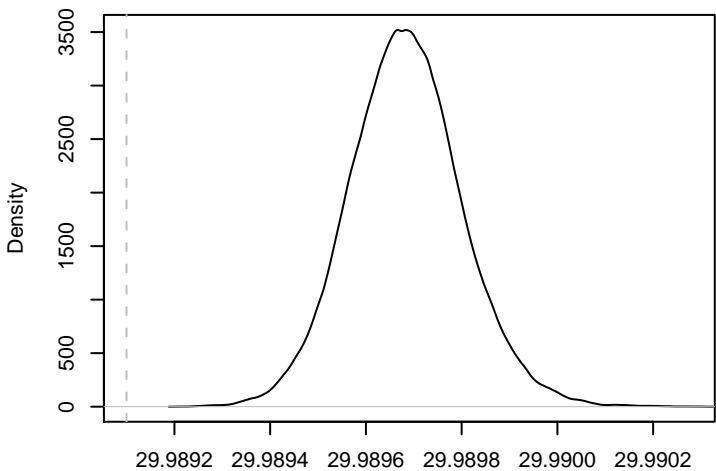


$m_c$ 

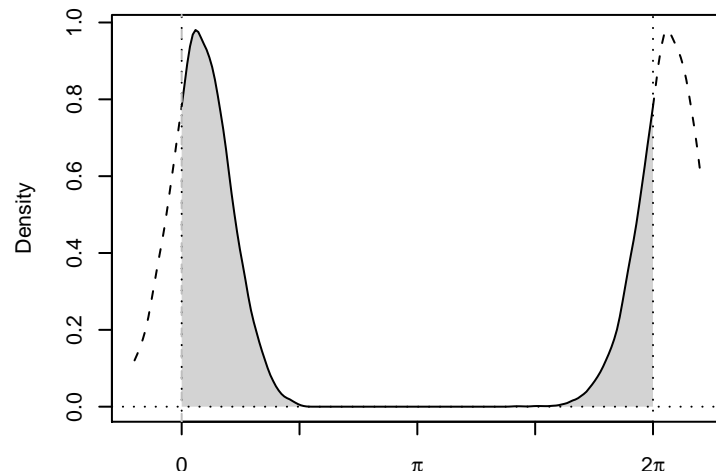
N = 16200 Bandwidth =  $8.428e-05$

 $\eta$ 

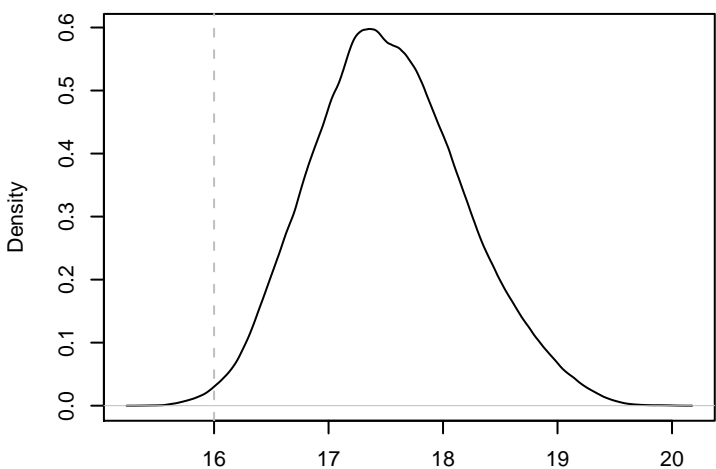
N = 16200 Bandwidth = 0.0001056

 $t_c$ 

N = 16200 Bandwidth =  $1.463e-05$

 $\phi_0$ 

N = 16200 bandwidth = 0.05332 kernel = epanechnikov

 $d_L$ 

N = 16200 Bandwidth = 0.08523

true parameters:

$m_c = 2.722$

$\eta = 0.1268$

$t_c = 700000330$

$\phi_0 = 0$

$d_L = 16$

---

Every 50th out of  
iterations 50000 to 252450  
from 4 parallel chain(s)  
(16200 samples).  
Acceptance rate: 8.86%

