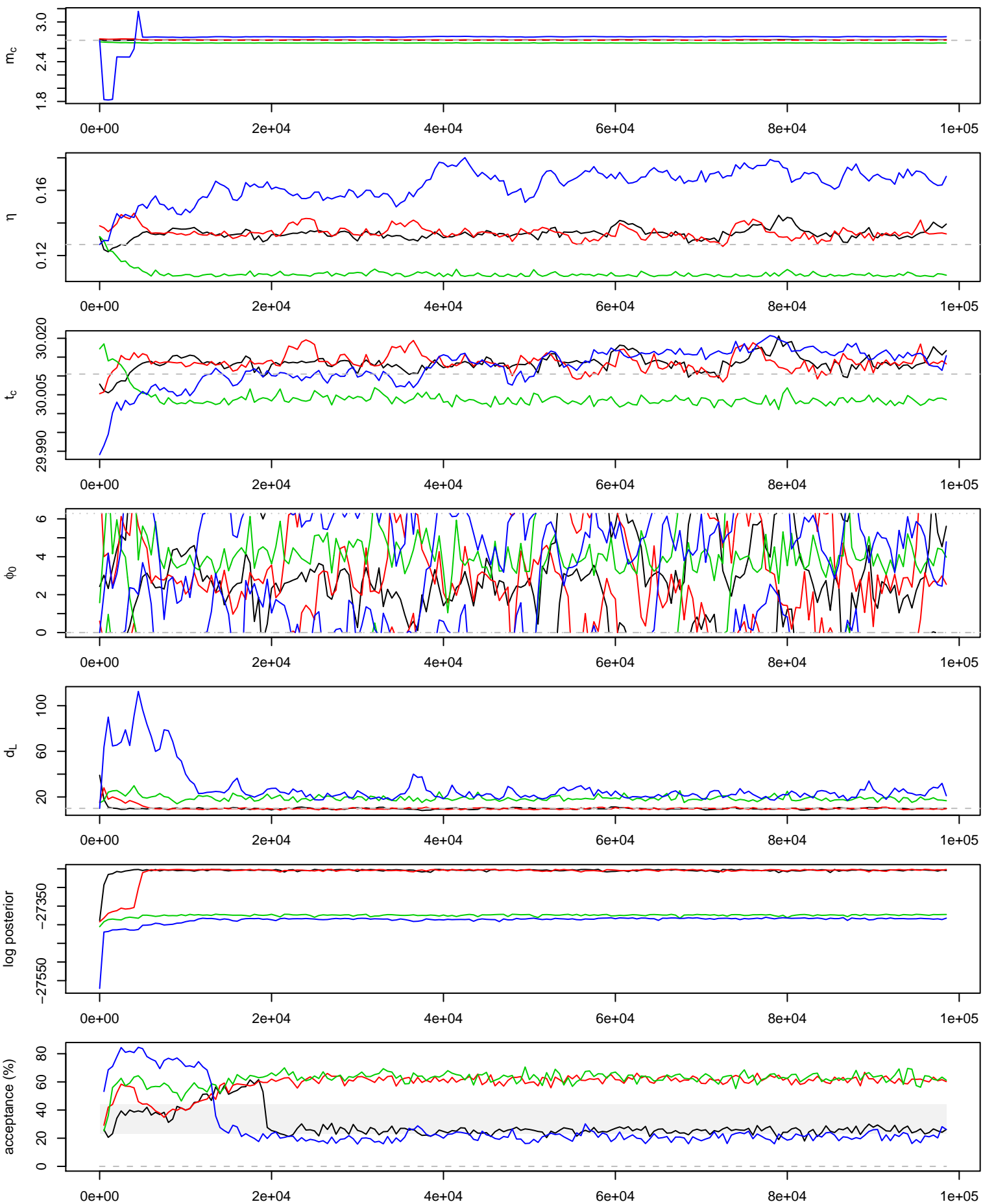
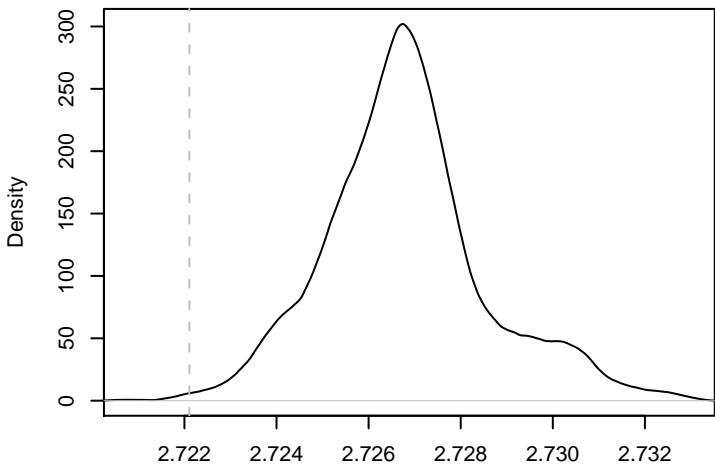
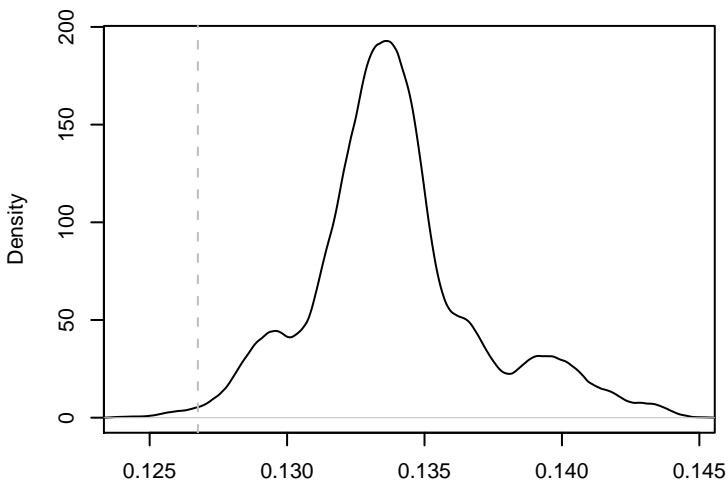


98500 iterations, 198 draws from 4 parallel chains.

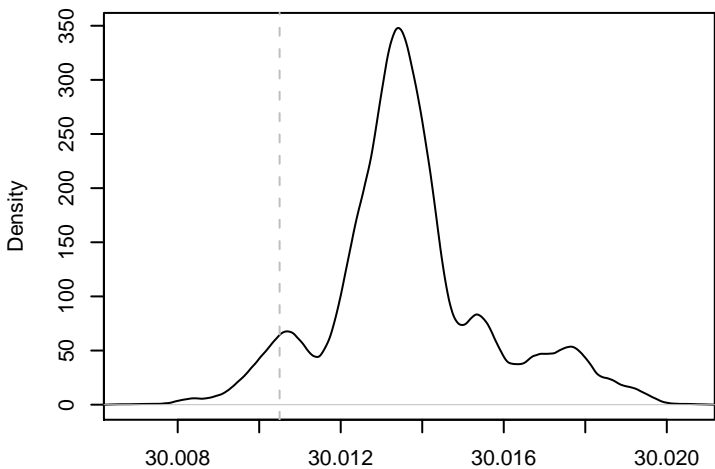


m_c 

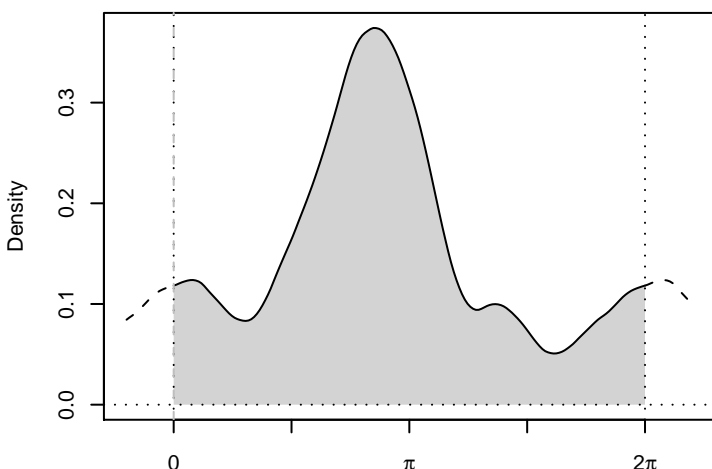
N = 3708 Bandwidth = 0.00025

 η 

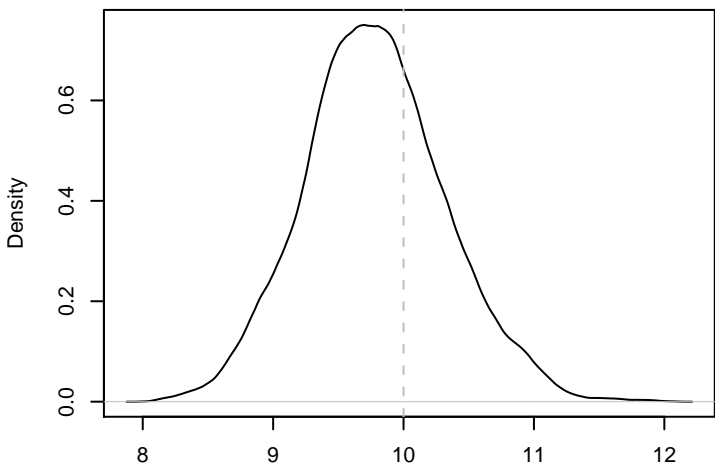
N = 3708 Bandwidth = 0.0003746

 t_c 

N = 3708 Bandwidth = 0.0002262

 ϕ_0 

N = 3708 bandwidth = 0.2193 kernel = epanechnikov

 d_L 

N = 3708 Bandwidth = 0.09004

true parameters:

 $m_c = 2.722$ $\eta = 0.1268$ $t_c = 700000330$ $\phi_0 = 0$ $d_L = 10$

Every 50th out of
iterations 6000 to 98650
from 2 parallel chain(s)
(3708 samples).
Acceptance rate: 44.2%

