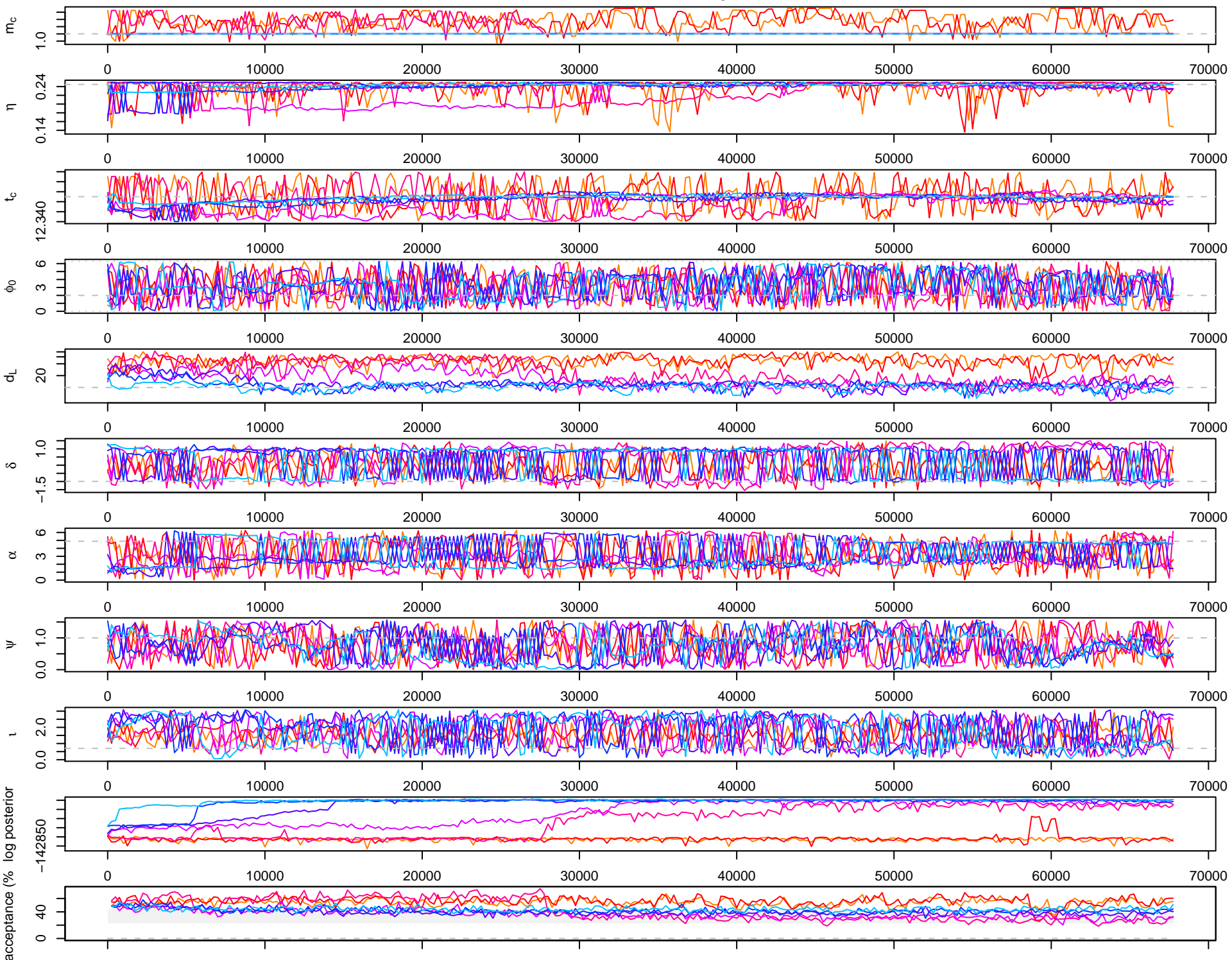
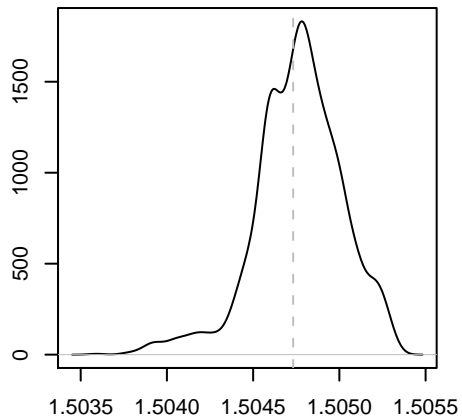
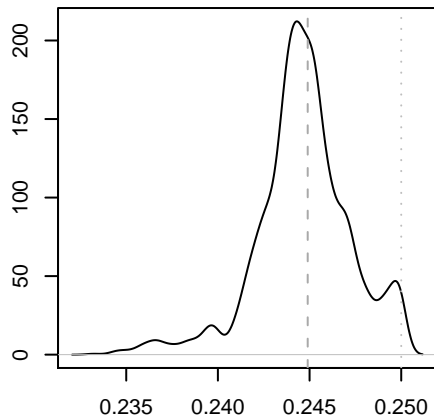
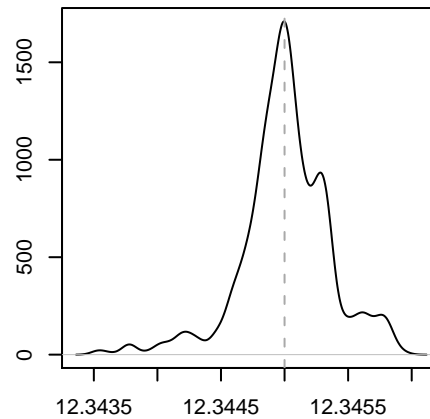


67750 iterations, 272 draws from 7 parallel chains.



m_c  η  t_c 

true parameters:

$m_c = 1.505$

$\eta = 0.2449$

$t_c = 700009012$

$d_L = 10.0$

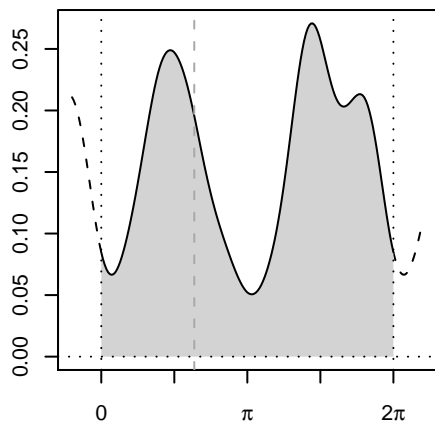
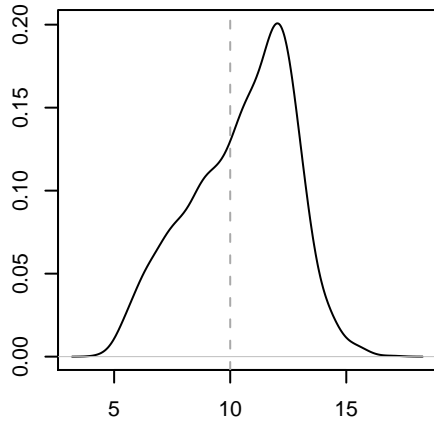
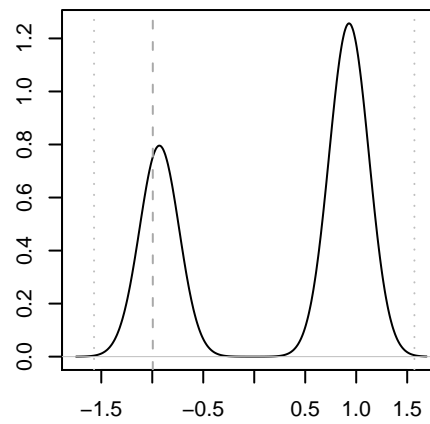
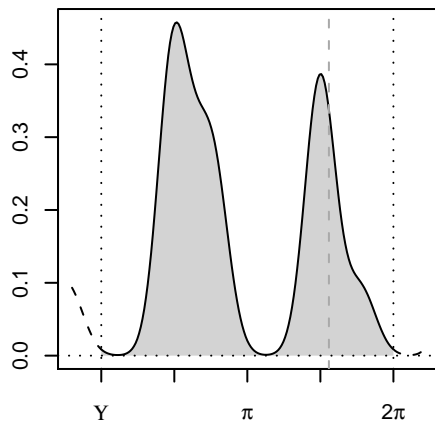
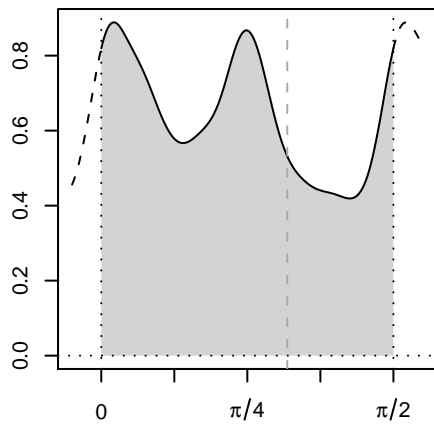
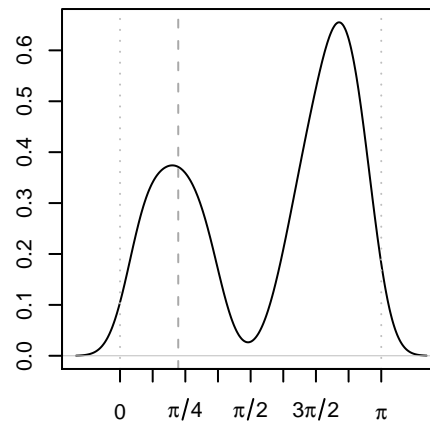
$\delta = -0.995$

$\alpha = 4.896$

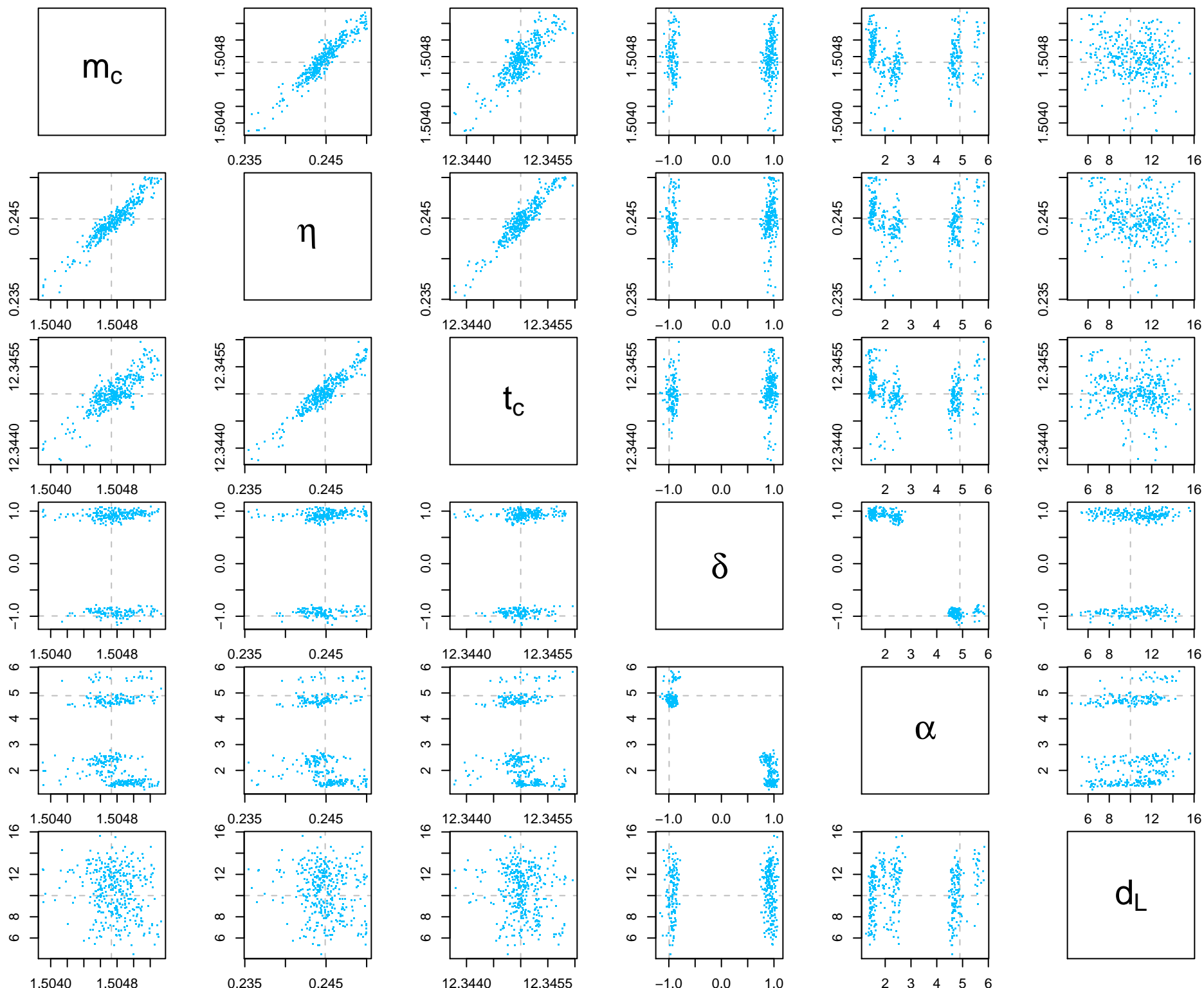
$\psi = 1.000$

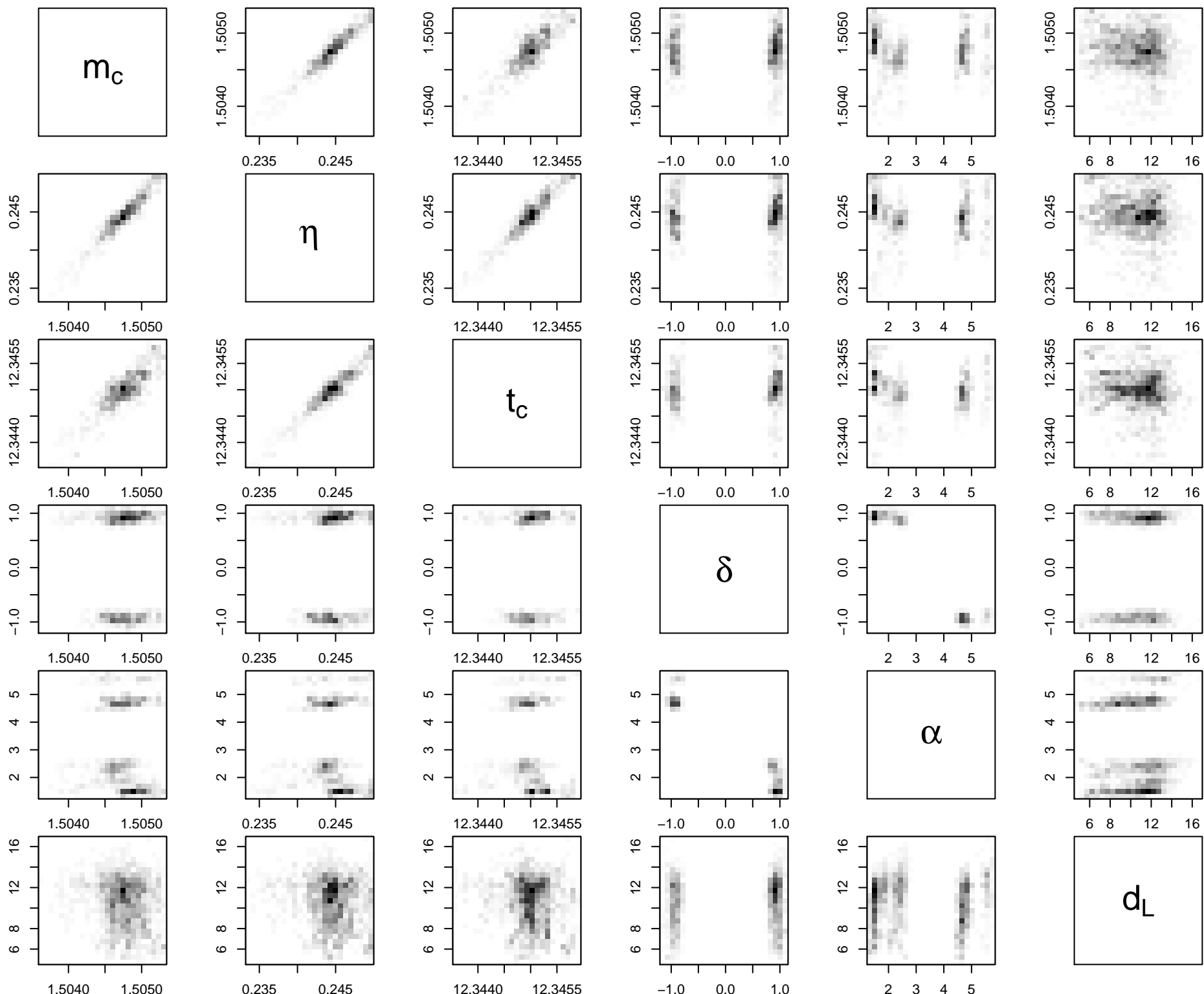
$\iota = 0.700$

$\phi_0 = 2.000$

 ϕ_0  d_L  δ  α  ψ  ι 

Every 25th out of
iterations 20000 to 67925
from 1 parallel chain(s)
(1918 samples).
Acceptance rate: 43.4%





max. likelihood ratio: $6.767e+93$

