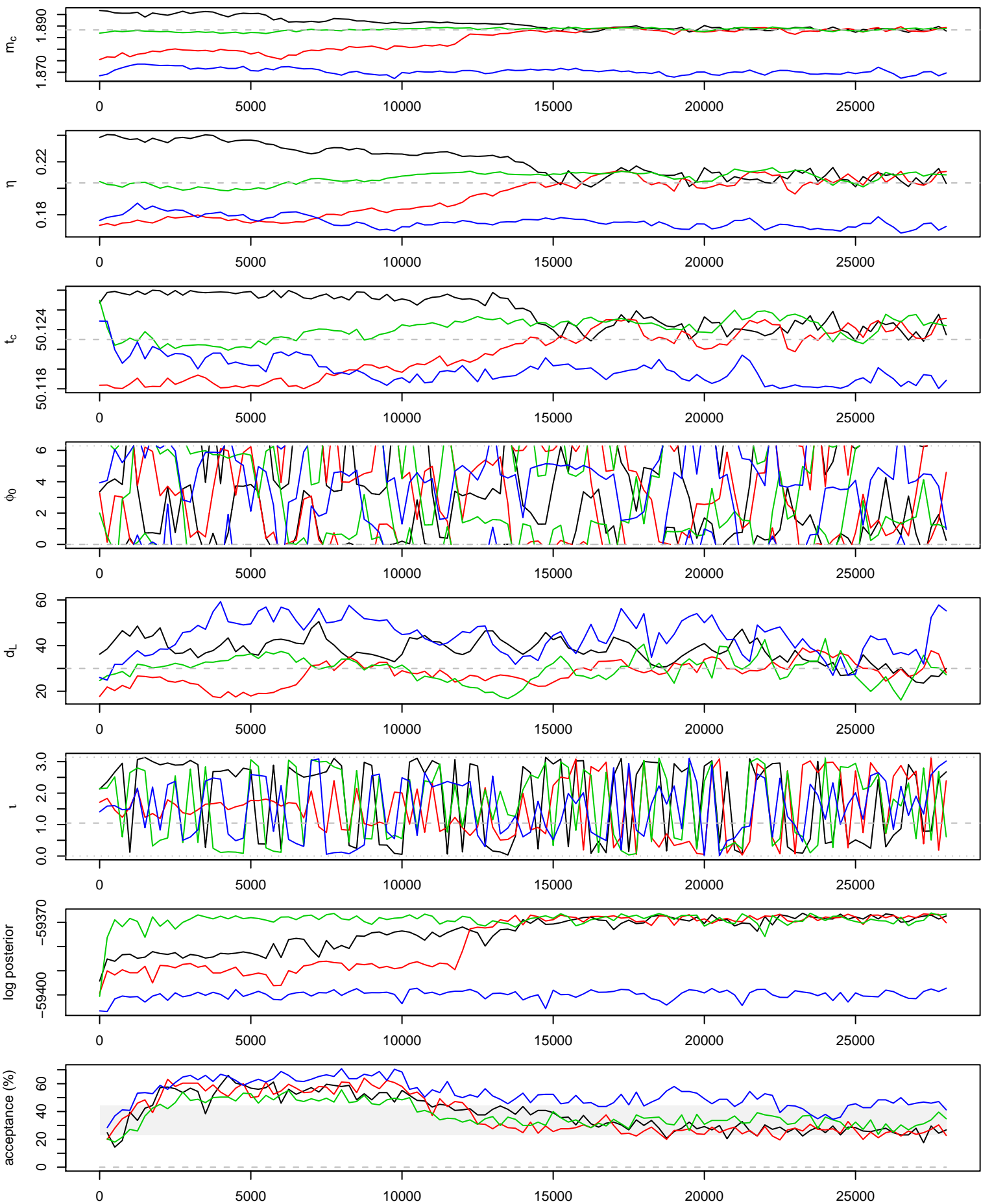
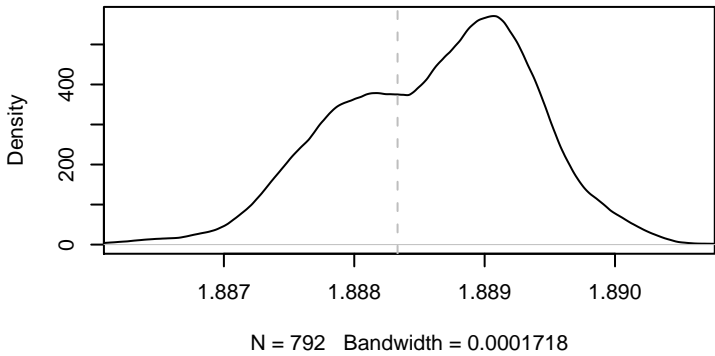
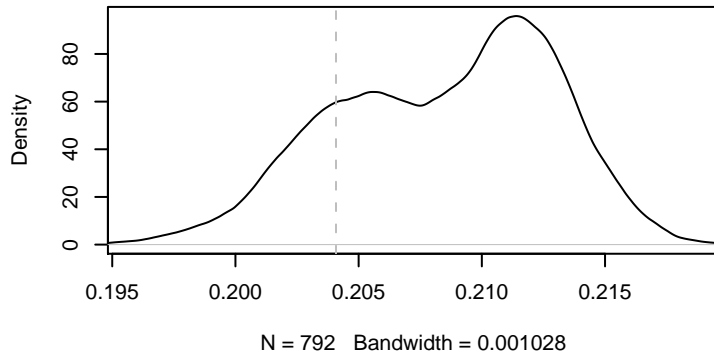
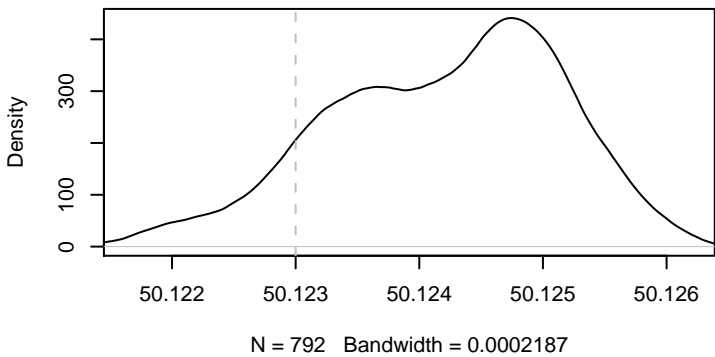
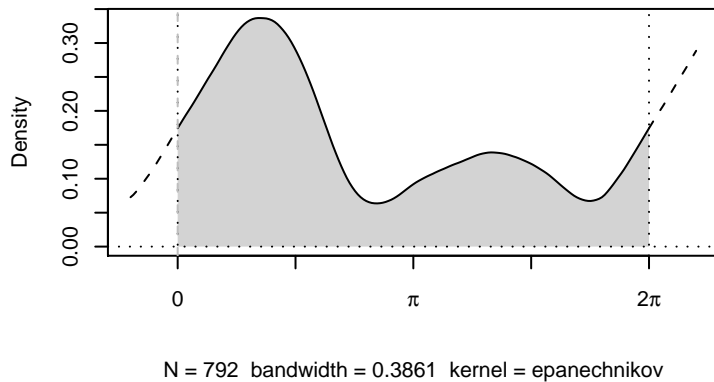
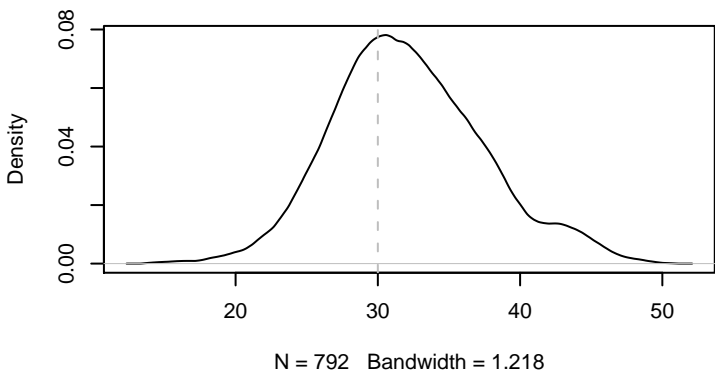


28000 iterations, 113 draws from 4 parallel chains.



$m_c$  $\eta$  $t_c$  $\phi_0$  $d_L$ 

true parameters:

$m_c = 1.888$

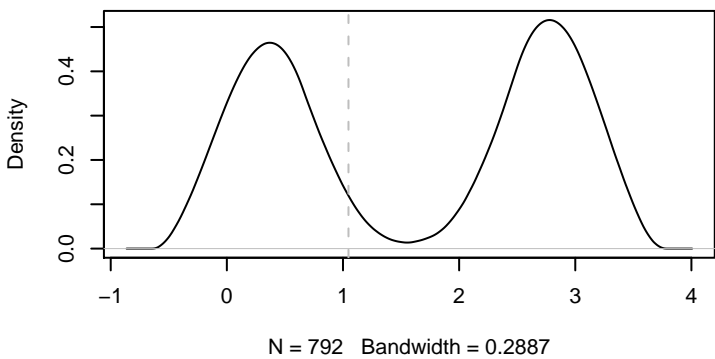
$\eta = 0.2041$

$t_c = 700000550$

$\phi_0 = 0$

$d_L = 30$

$\tau = 1.047$

 $\tau$ 


---

Every 50th out of  
iterations 15000 to 28150  
from 3 parallel chain(s)  
(792 samples).  
Mean acceptance rate: 29%

