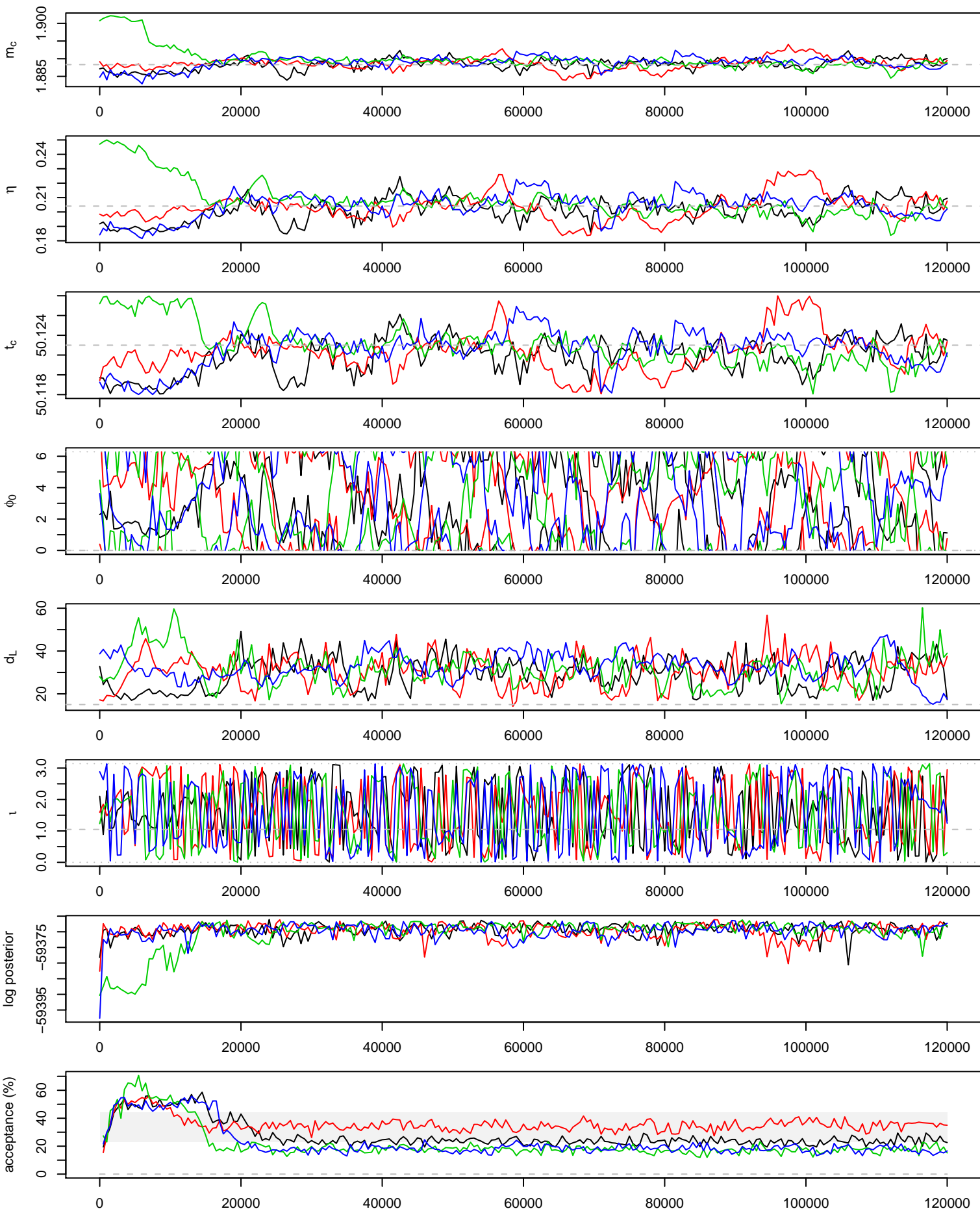
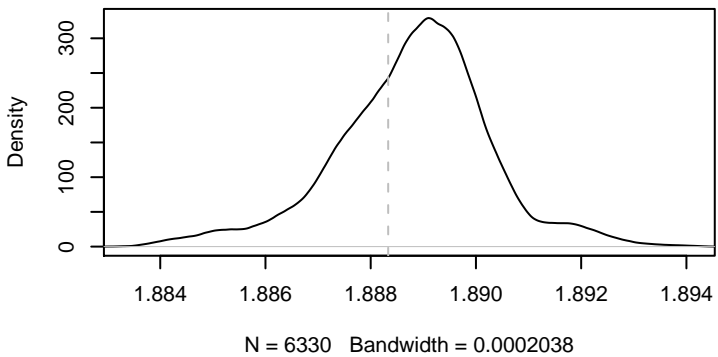


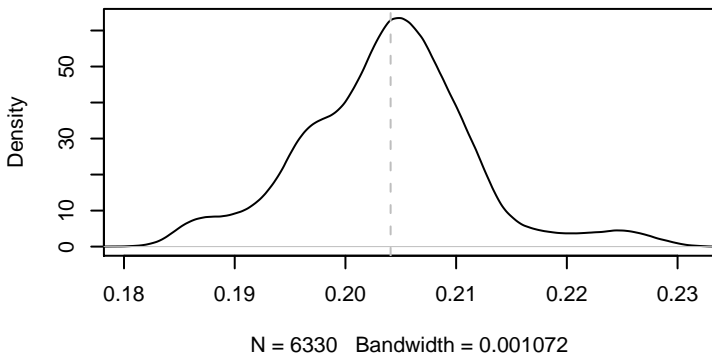
120000 iterations, 241 draws from 4 parallel chains.



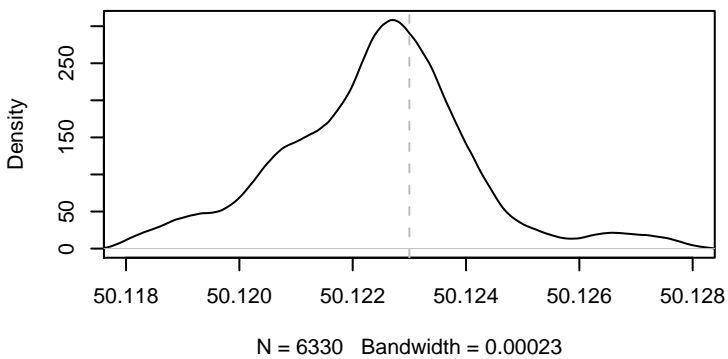
m_c



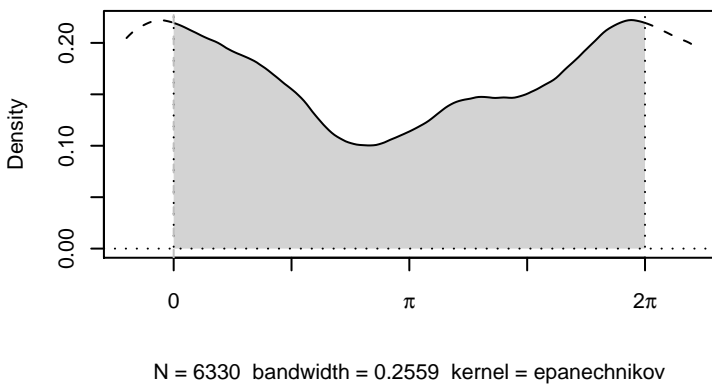
η



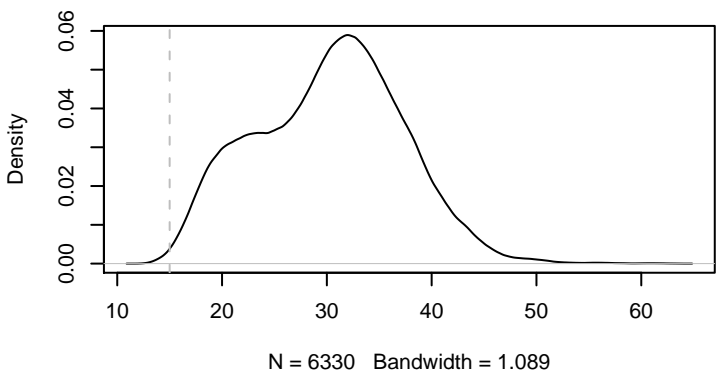
t_c



ϕ_0



d_L



true parameters:

$m_c = 1.888$

$\eta = 0.2041$

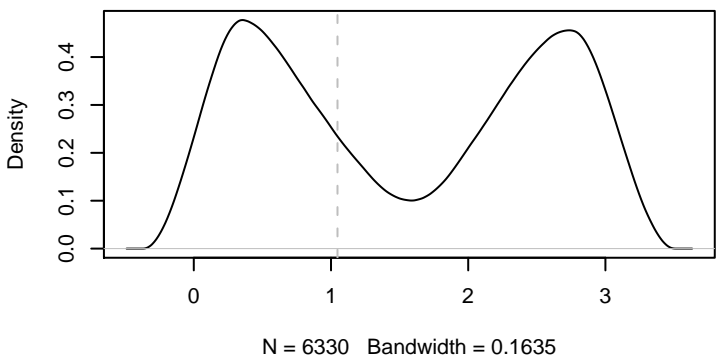
$t_c = 700000550$

$\phi_0 = 0$

$d_L = 15$

$\tau = 1.047$

τ



Every 50th out of
iterations 15000 to 120450
from 3 parallel chain(s)
(6330 samples).
Mean acceptance rate: 25.6%

