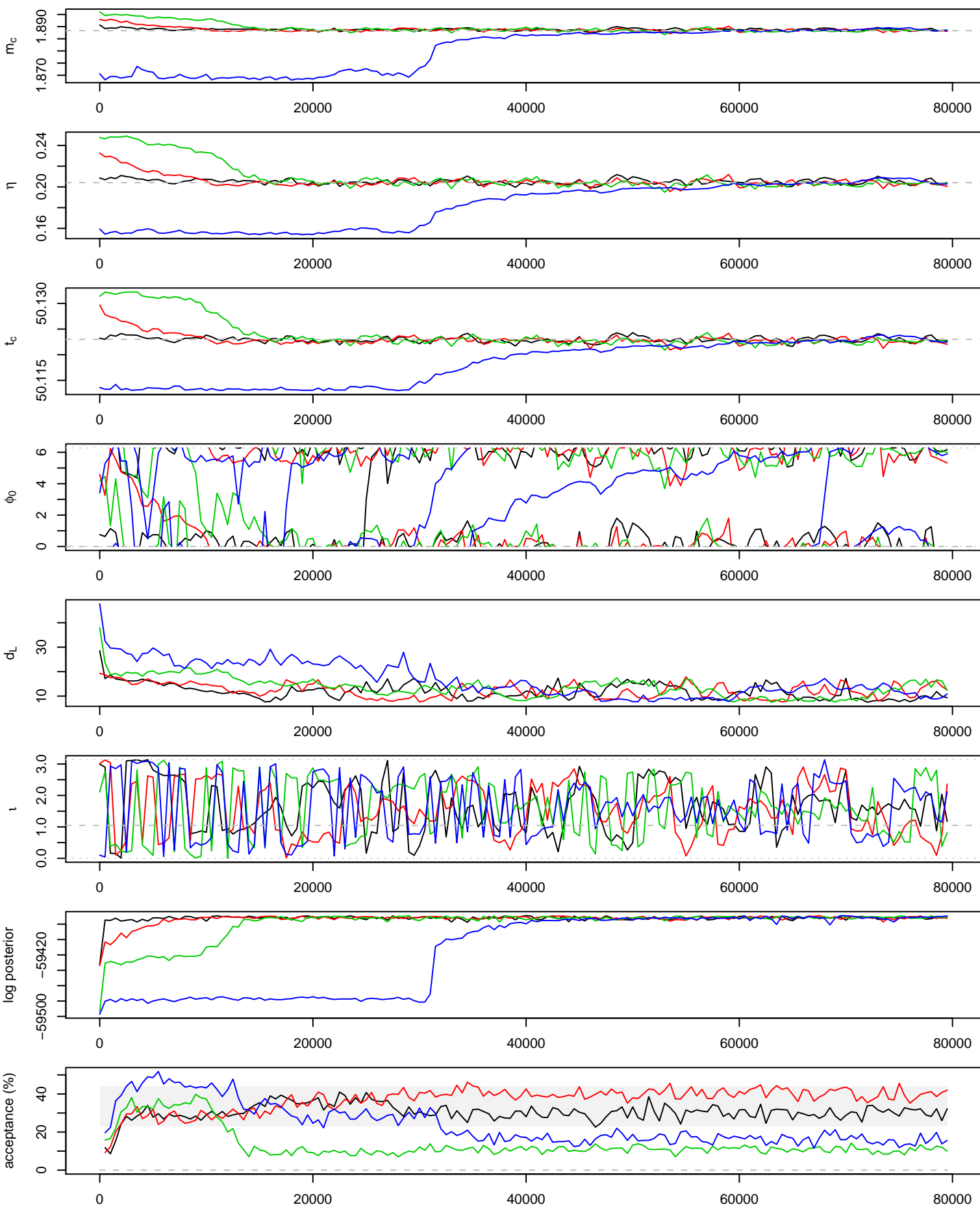
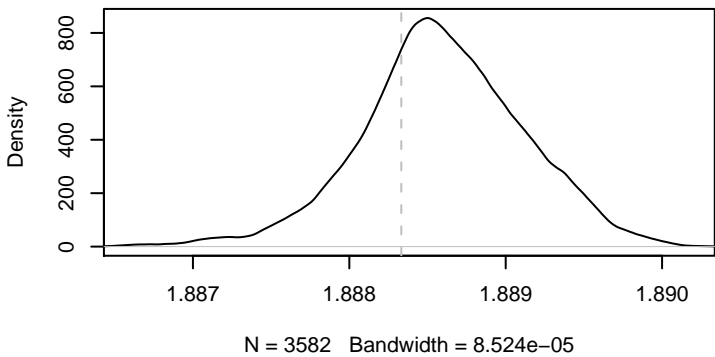
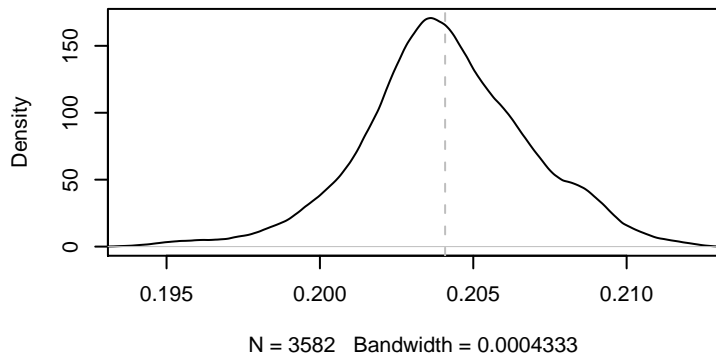
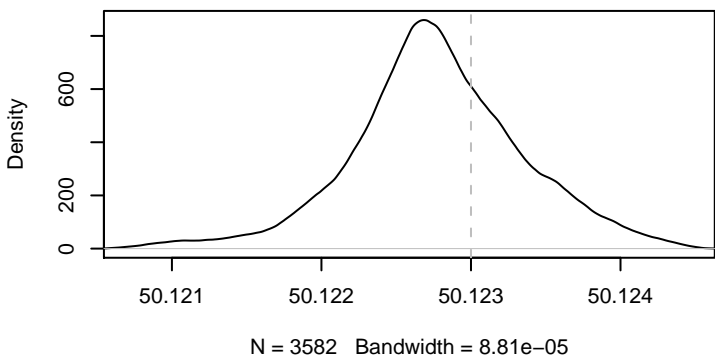
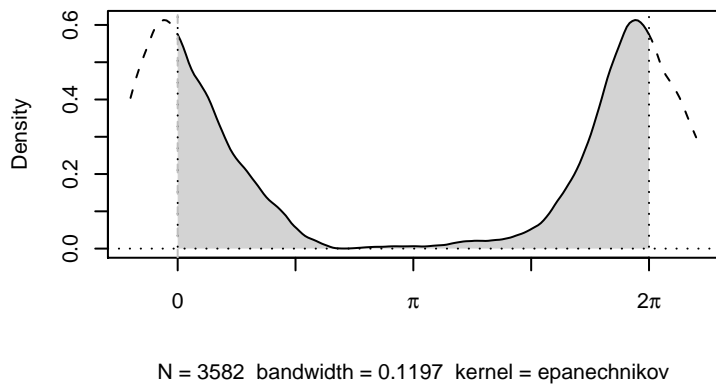
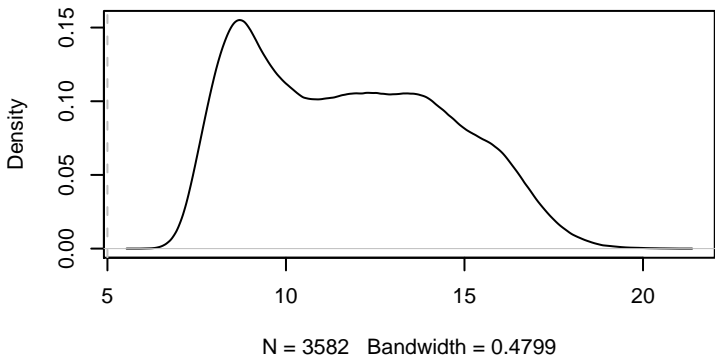
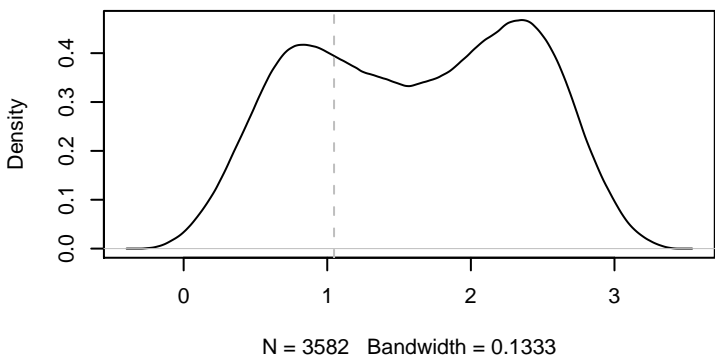


79500 iterations, 160 draws from 4 parallel chains.



m_c  η  t_c  ϕ_0  d_L 

true parameters:

 $m_c = 1.888$ $\eta = 0.2041$ $t_c = 700000550$ $\phi_0 = 0$ $d_L = 5$ $\tau = 1.047$ τ 

Every 50th out of
iterations 20000 to 79650
from 3 parallel chain(s)
(3582 samples).
Mean acceptance rate: 27.1%

