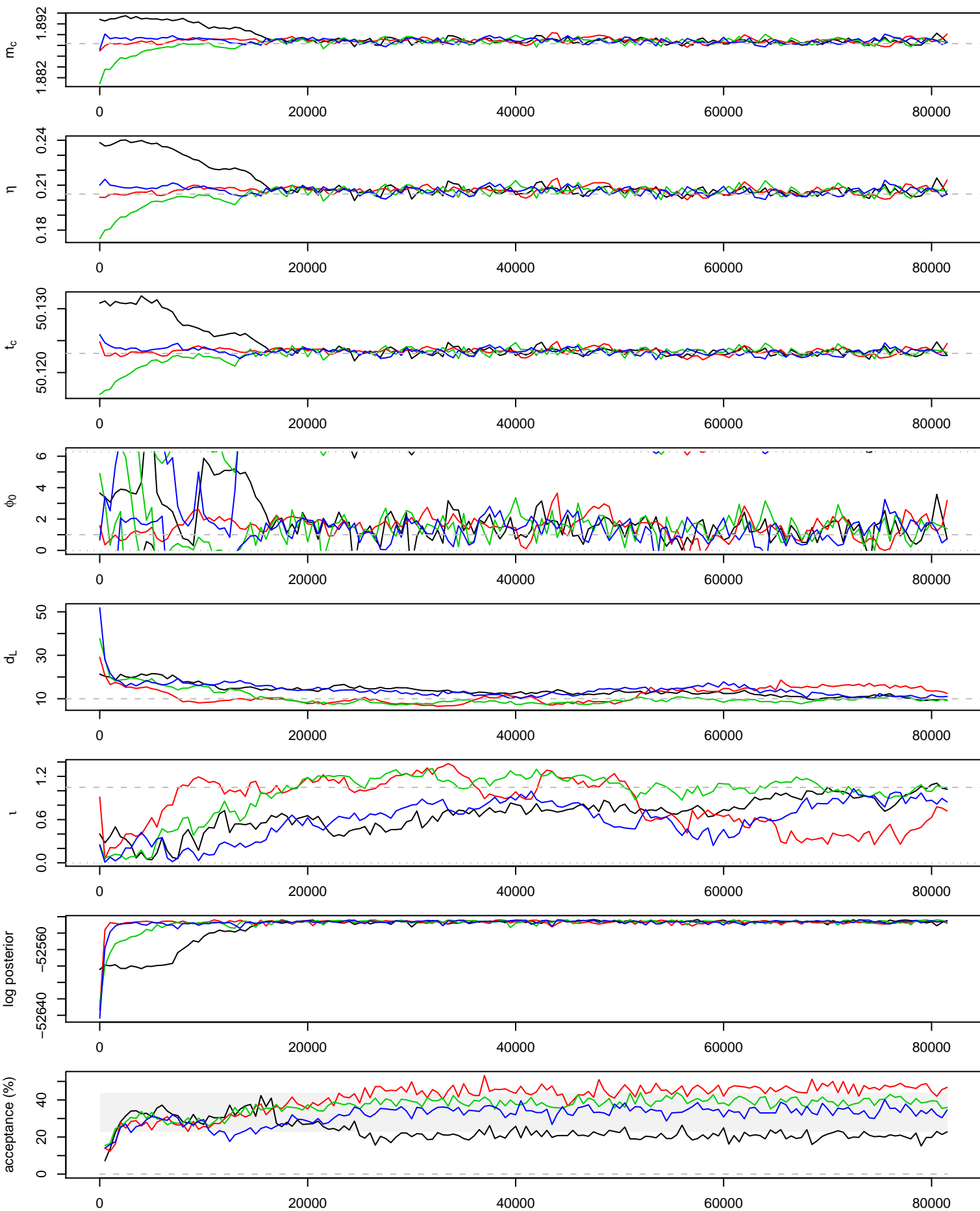
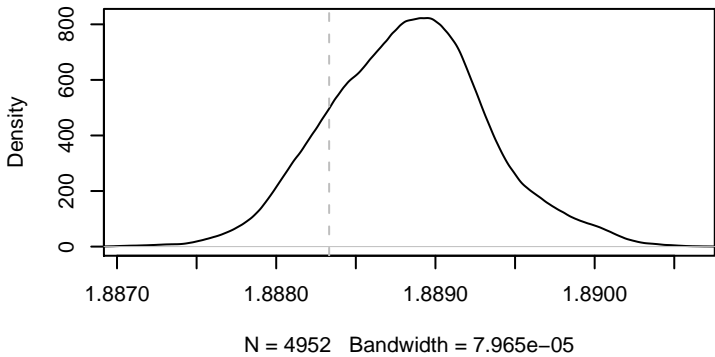


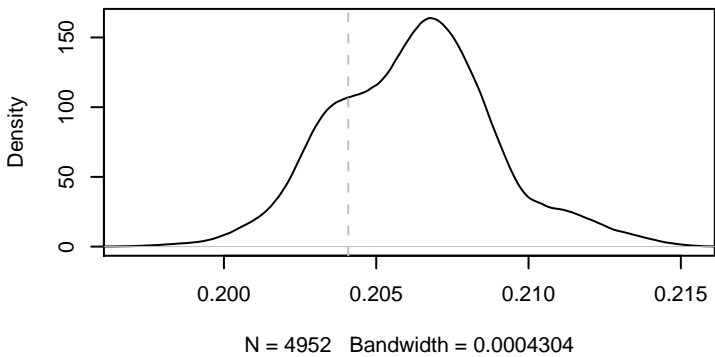
81500 iterations, 164 draws from 4 parallel chains.



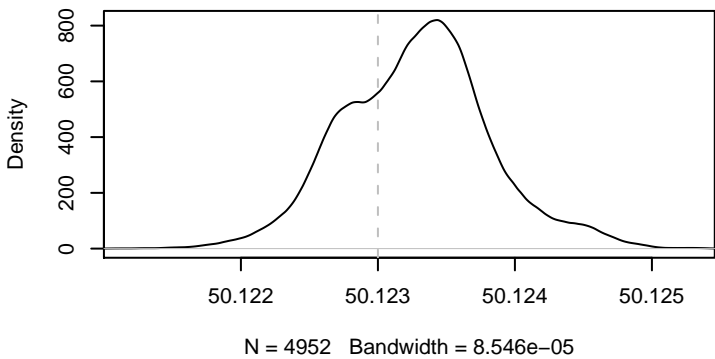
m_c



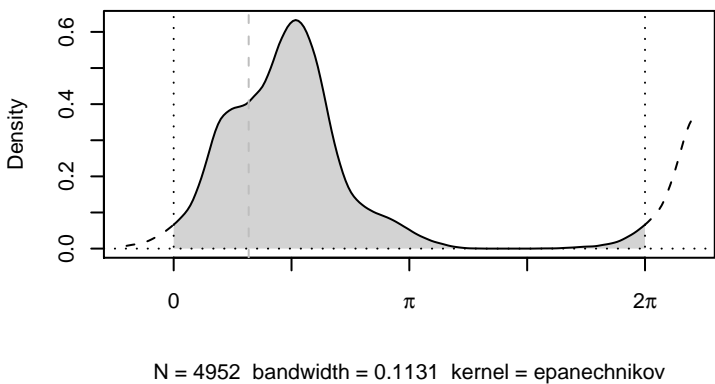
η



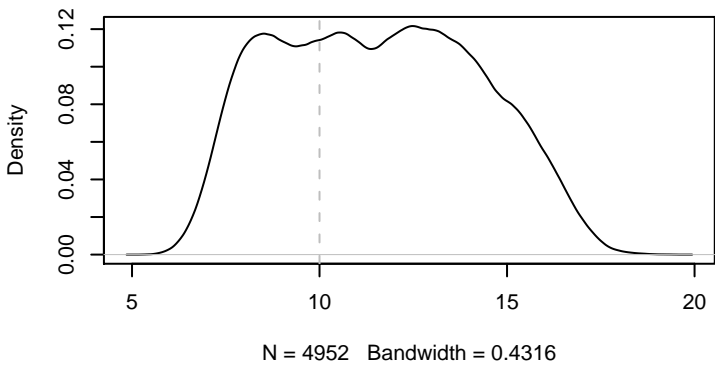
t_c



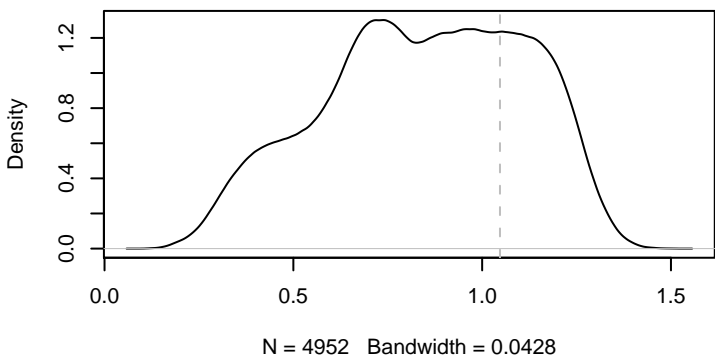
ϕ_0



d_L



τ



true parameters:

$m_c = 1.888$

$\eta = 0.2041$

$t_c = 700004550$

$\phi_0 = 1$

$d_L = 10$

$\tau = 1.047$

Every 50th out of
iterations 20000 to 81850
from 4 parallel chain(s)
(4952 samples).
Mean acceptance rate: 34.8%

