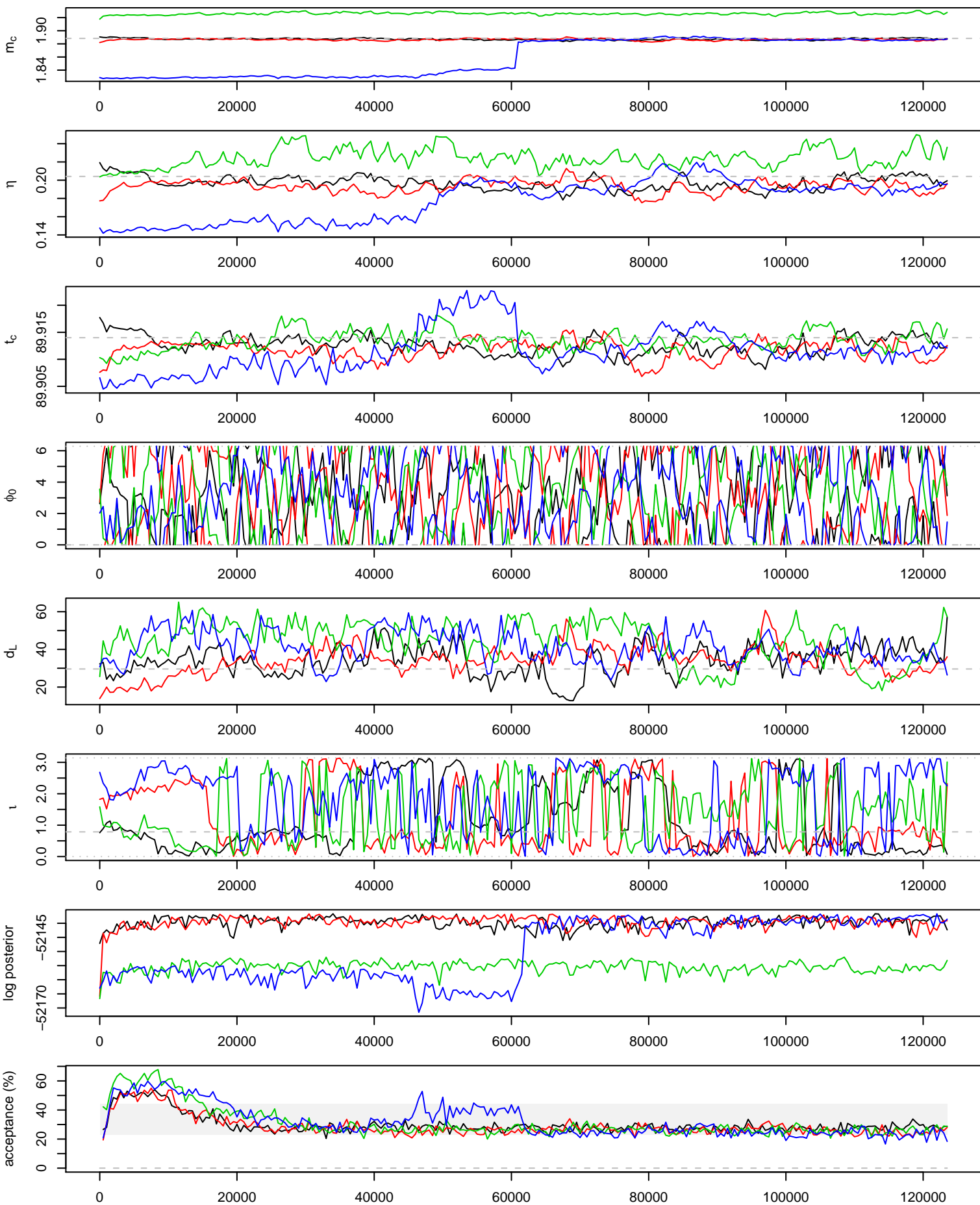
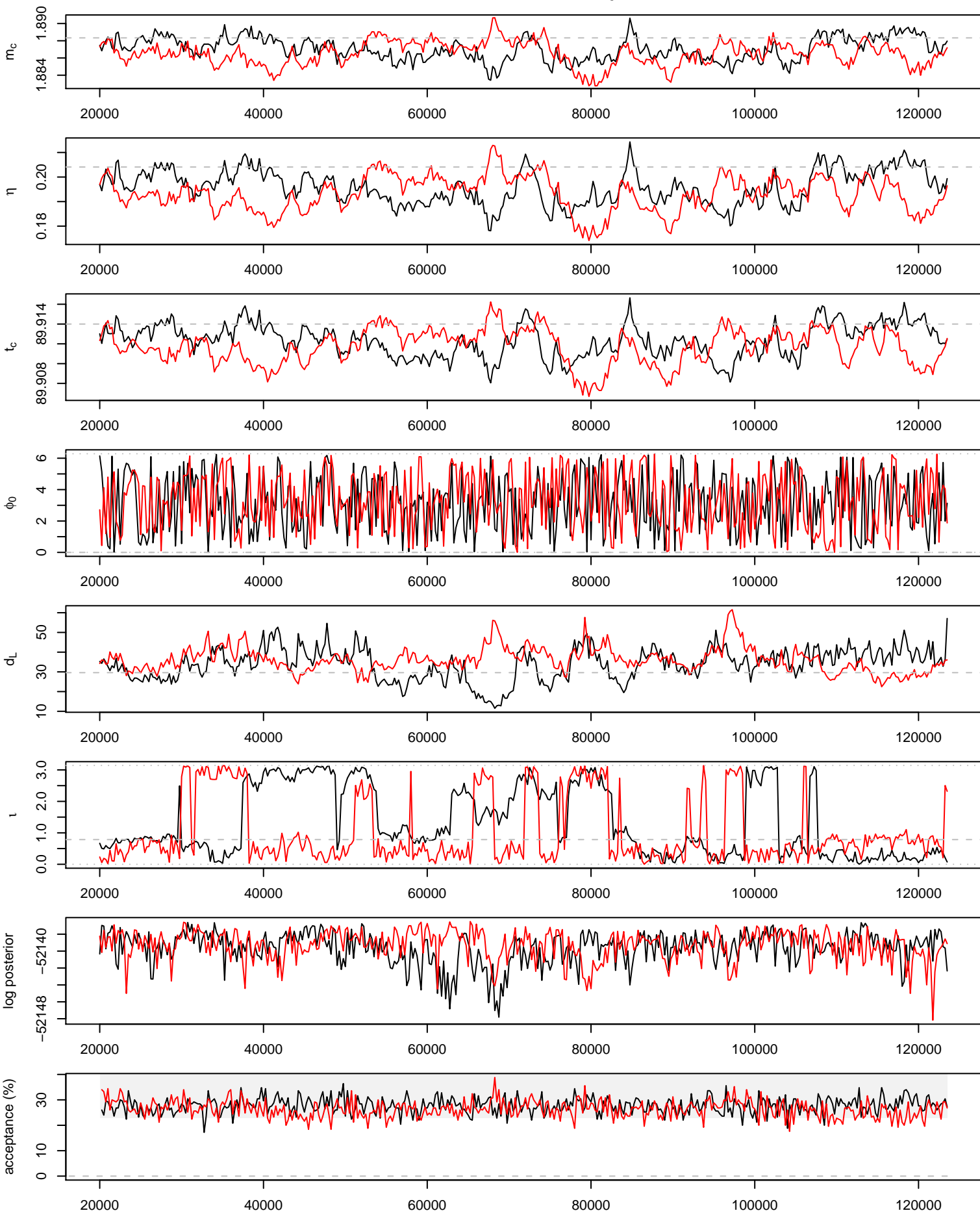
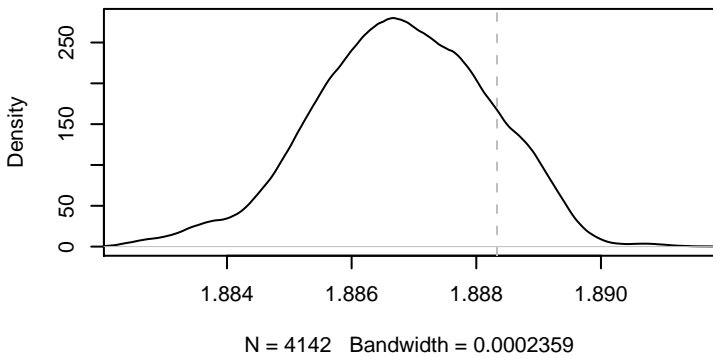
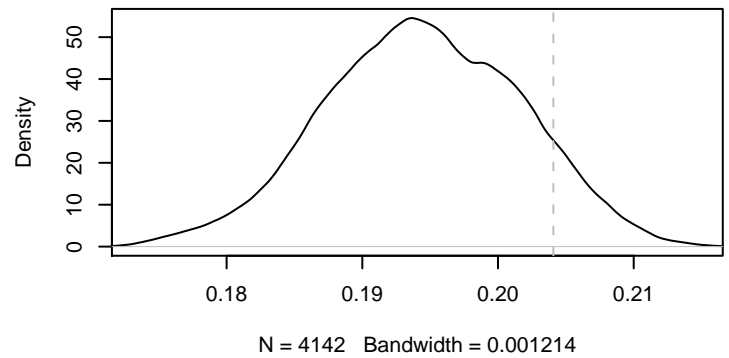
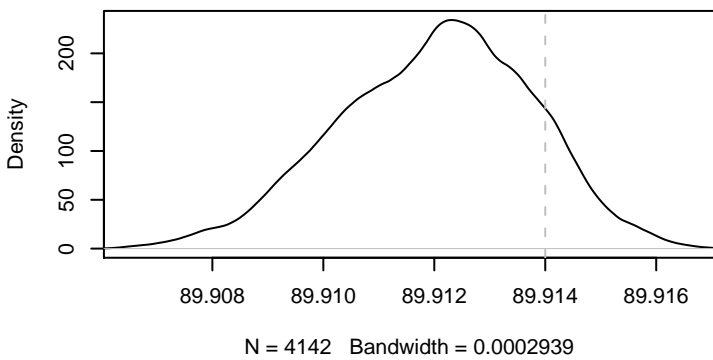
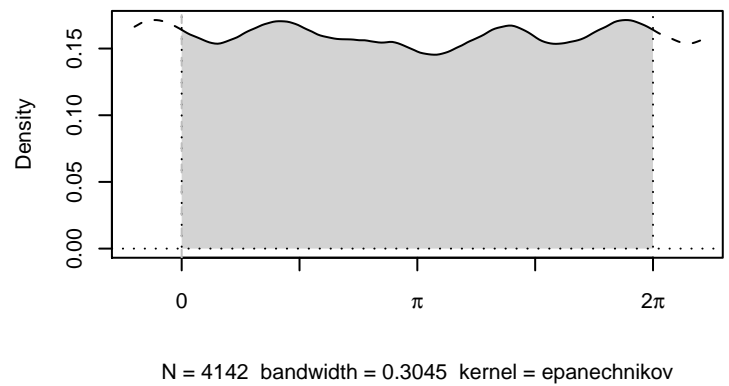
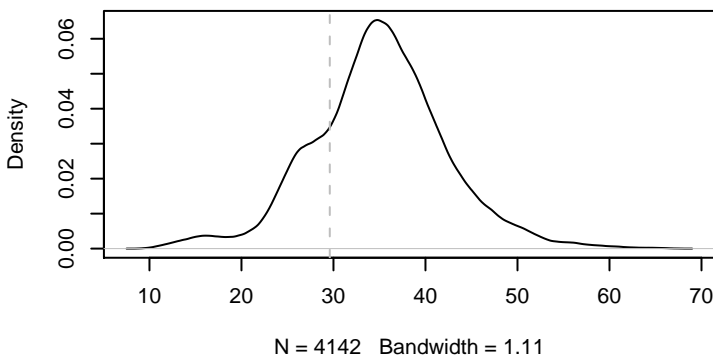


123500 iterations, 248 draws from 4 parallel chains.



123500 iterations, 415 draws from 2 parallel chains.



m_c  η  t_c  ϕ_0  d_L 

true parameters:

$m_c = 1.888$

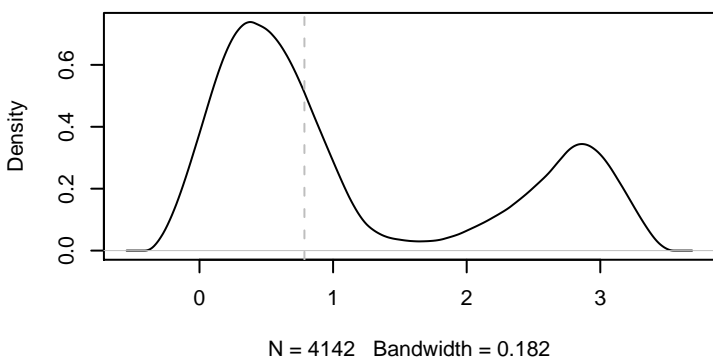
$\eta = 0.2041$

$t_c = 700002890$

$\phi_0 = 0$

$d_L = 29.6$

$\tau = 0.7854$

 τ 

Every 50th out of
iterations 20000 to 123500
from 2 parallel chain(s)
(4142 samples).
Mean acceptance rate: 27.1%

