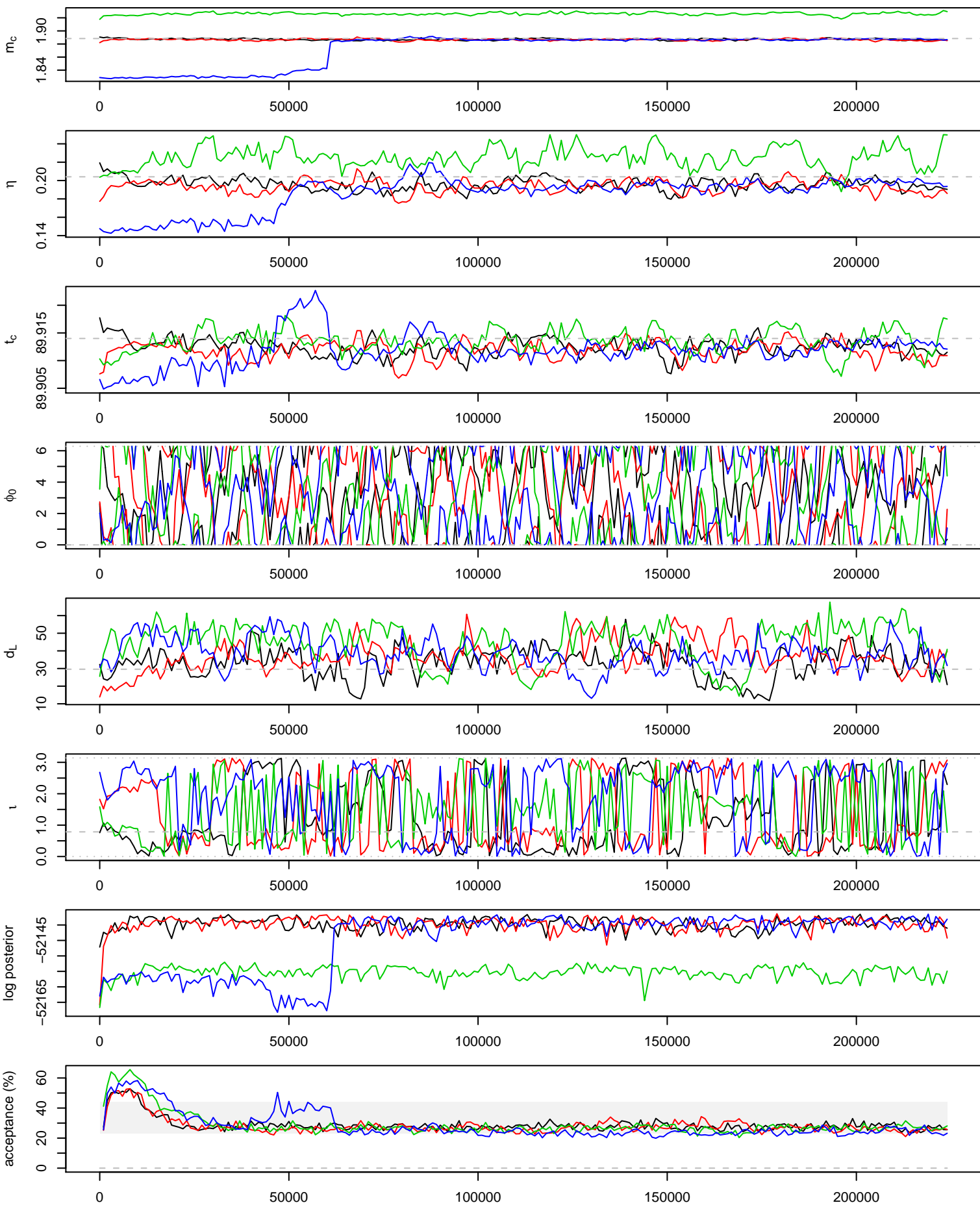
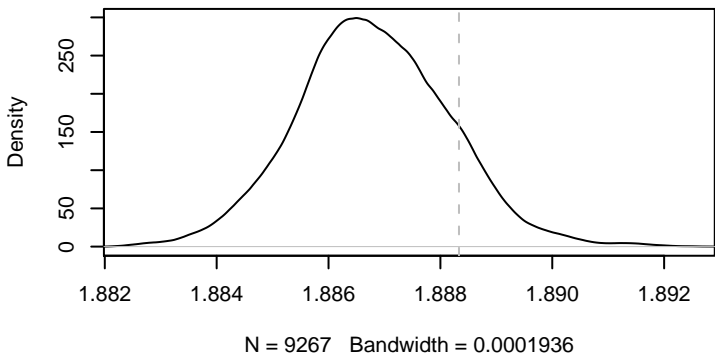
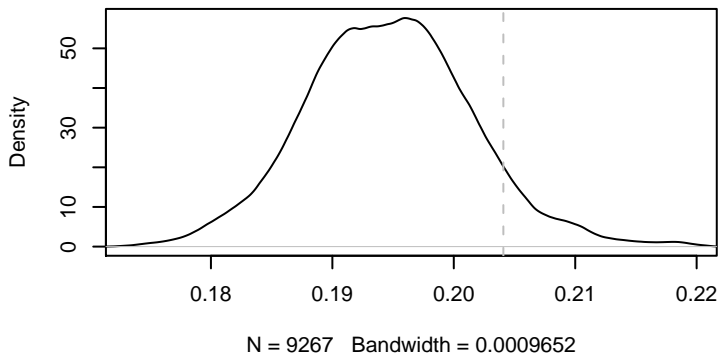
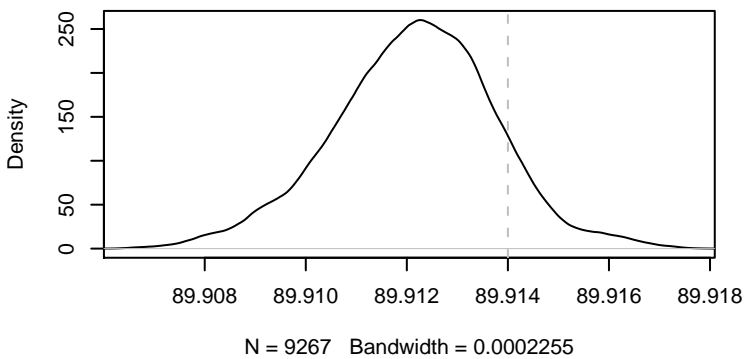
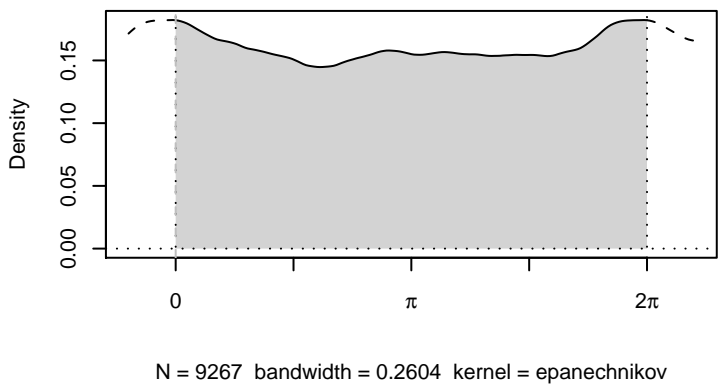
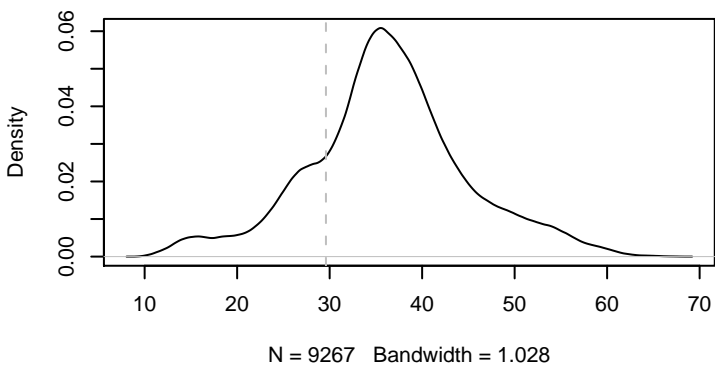


224000 iterations, 225 draws from 4 parallel chains.



$m_c$  $\eta$  $t_c$  $\phi_0$  $d_L$ 

true parameters:

$m_c = 1.888$

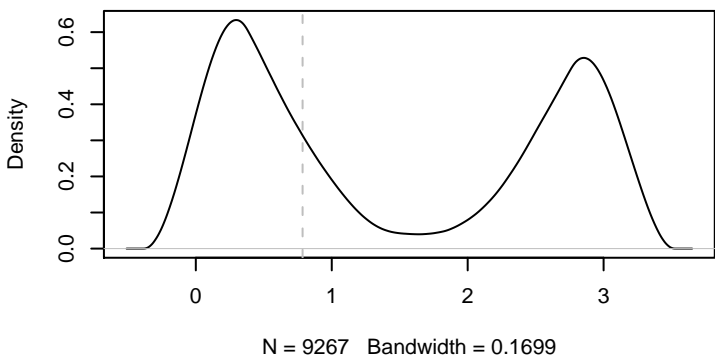
$\eta = 0.2041$

$t_c = 700002890$

$\phi_0 = 0$

$d_L = 29.6$

$\tau = 0.7854$

 $\tau$ 


---

Every 50th out of  
iterations 70000 to 224400  
from 3 parallel chain(s)  
(9267 samples).  
Mean acceptance rate: 26.2%

