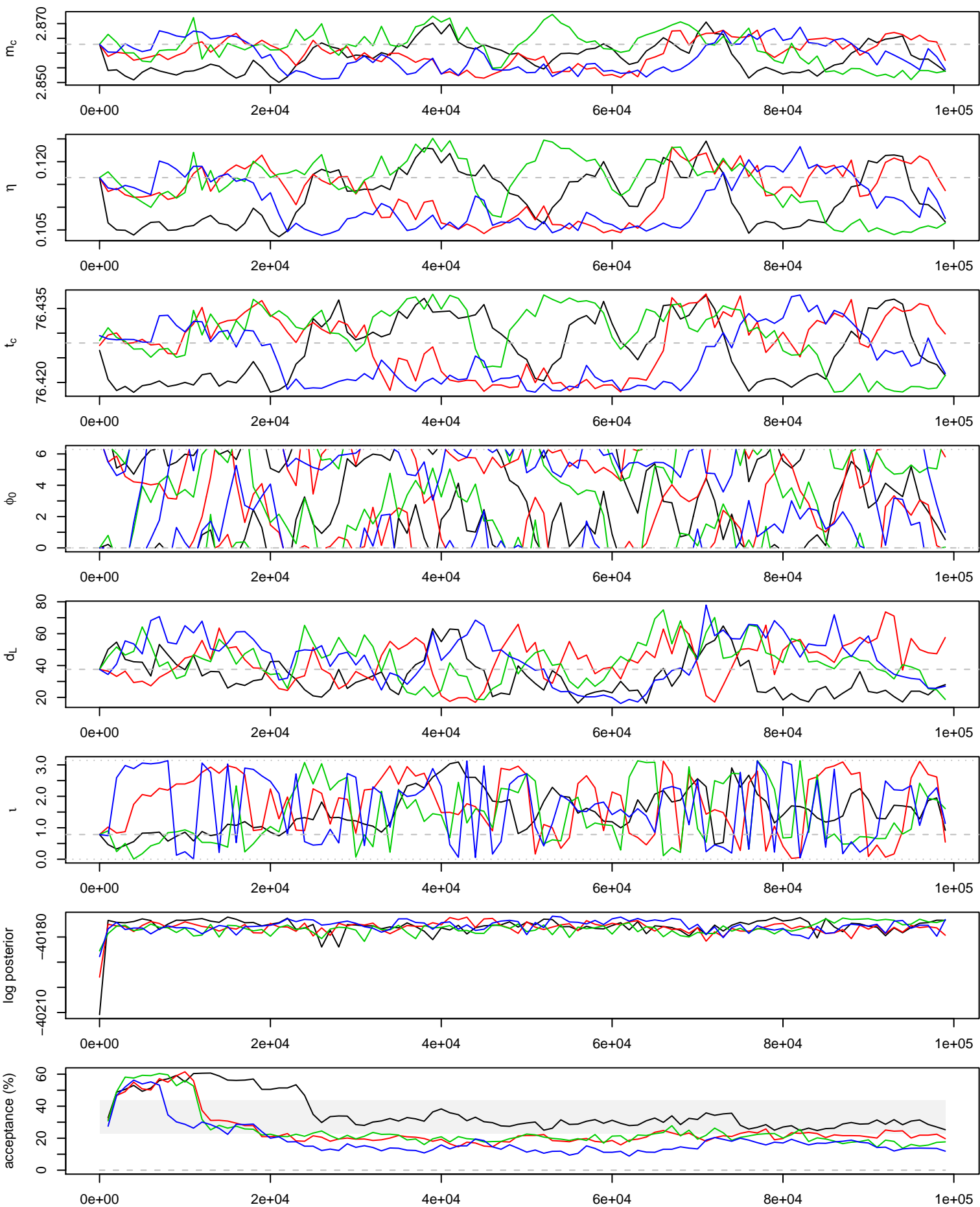
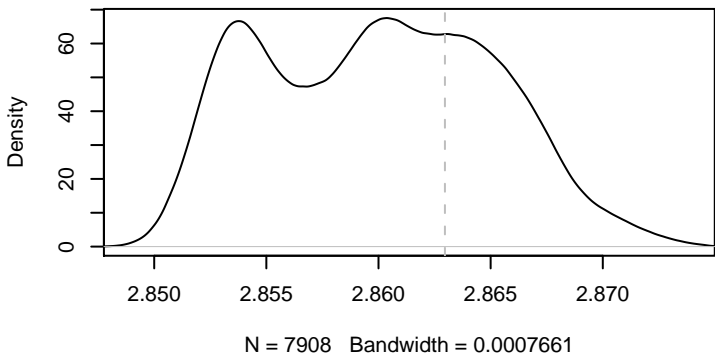
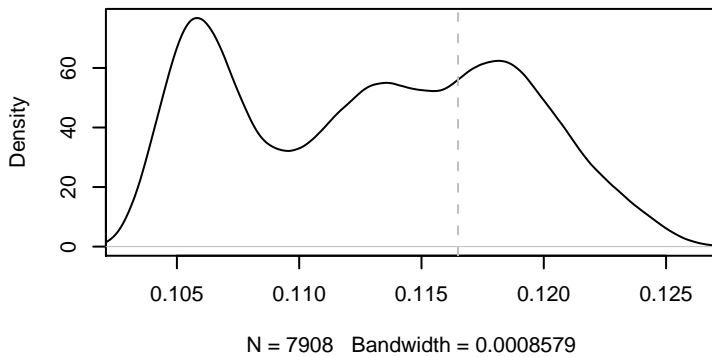
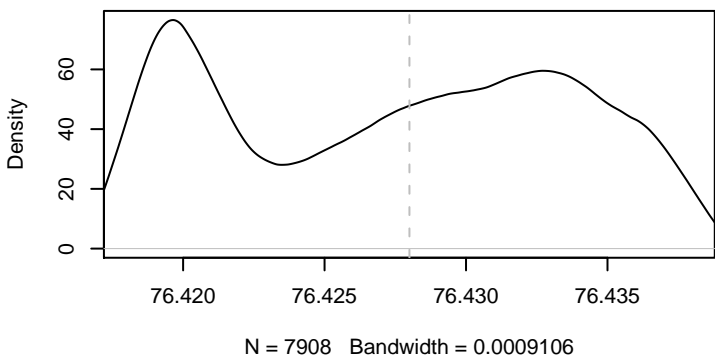
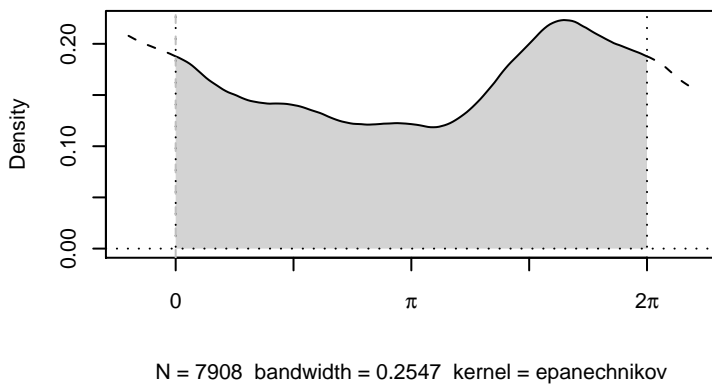
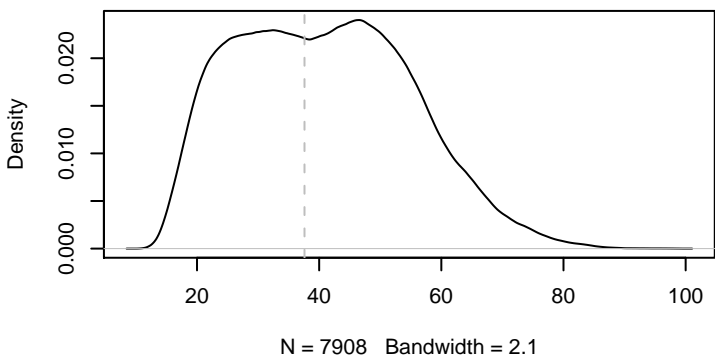
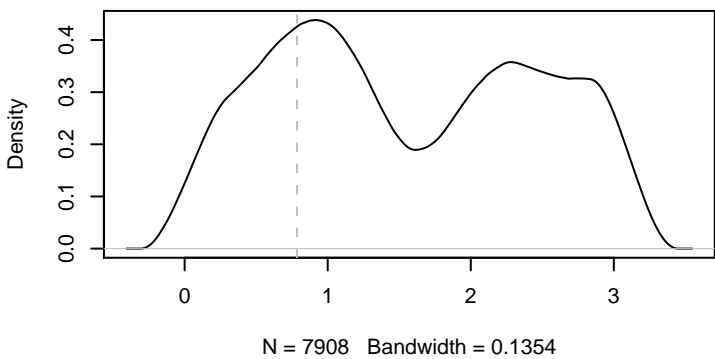


99000 iterations, 100 draws from 4 parallel chains.



m_c  η  t_c  ϕ_0  d_L  τ 

true parameters:

 $m_c = 2.863$ $\eta = 0.1165$ $t_c = 700004376$ $\phi_0 = 0$ $d_L = 37.6$ $\tau = 0.7854$

Every 50th out of
iterations 1000 to 99800
from 4 parallel chain(s)
(7908 samples).
Mean acceptance rate: 25.9%

