

## 1 Logging On

You can log on to the Linux machines in the Grad Room by using your UPI as the login name, and your NetAccount password as the password.

## 2 Setting up email

In order to use the Statistics Department's email service you will need to set up an application to gain access to it. There are many possible email clients which you may use. One of the best available, which works on Windows and on Linux/Unix is Thunderbird from Mozilla. These instructions show how to set up an email account using Thunderbird.

Start Thunderbird either by typing `thunderbird` at the prompt in a terminal window, or by choosing **Thunderbird Email** from the **Applications** menu under **Internet**. You should see the dialog box shown as Figure 1

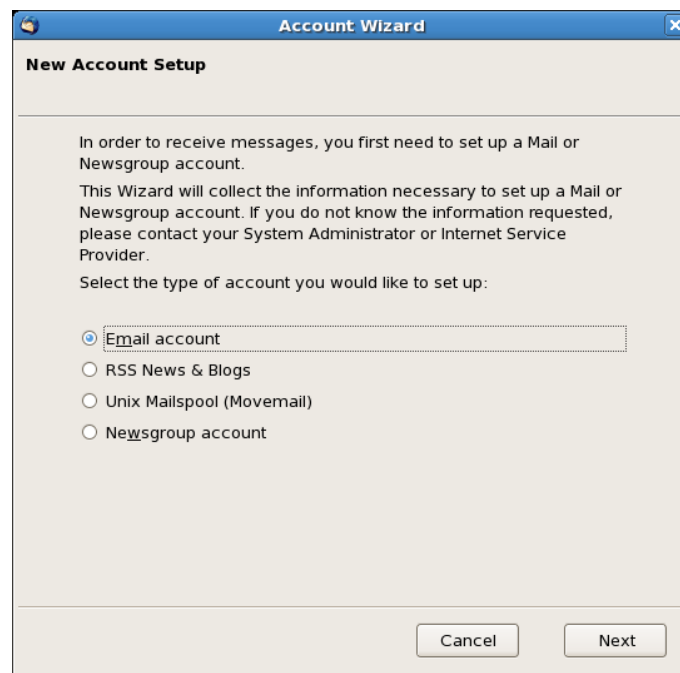


Figure 1: New Account Setup dialogue box

Choose **Email Account** to set up an email account (of course).

The next dialogue box shown in Figure 2 asks for your full name and your email address. **Note that the default address is incorrect.** You will have to erase the “yp” part of the address.

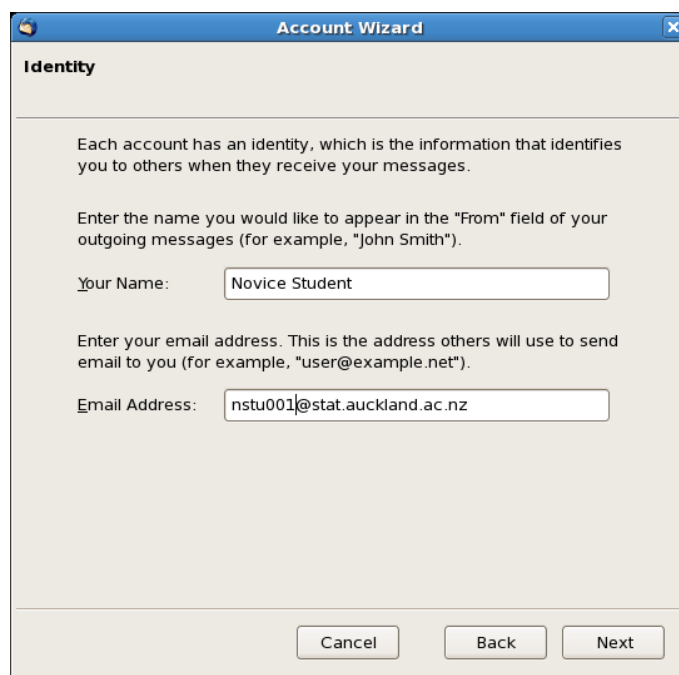


Figure 2: Identity dialogue box

The next dialogue box asks you to choose the methods for accessing and delivering your mail. The right choices are shown in Figure 3

You will next be prompted for your login name for your Statistics Department account, which is your UPI. The dialogue box is shown in Figure 4.

The following box asks you to name your account. You may leave it as it is or change it to something like **Statistics Department**. It is up to you. The dialogue box is shown in Figure 5.

The final dialogue box shown in Figure 6 gives you a chance to check the choices you made previously. If you notice an error, use the **j Back** key to go back and make appropriate changes. If everything is OK, press the **Finish** button.



Figure 3: Server Information dialogue box

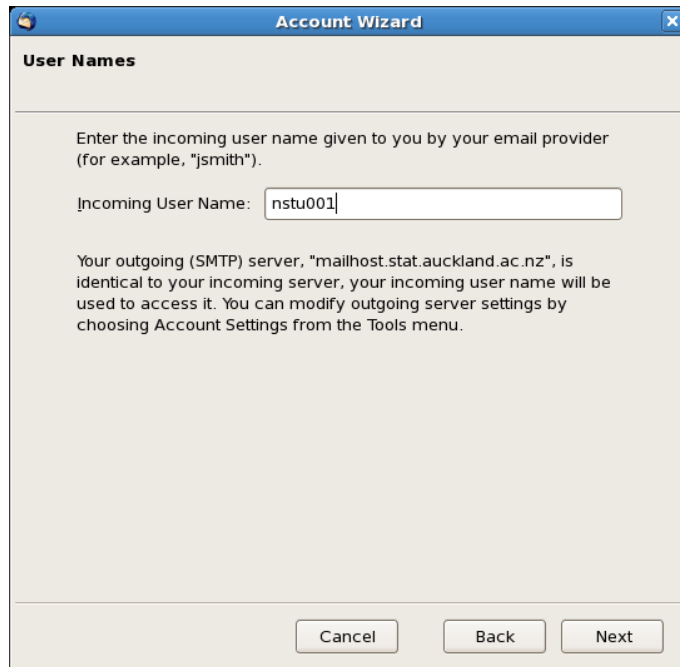


Figure 4: User Name dialogue box

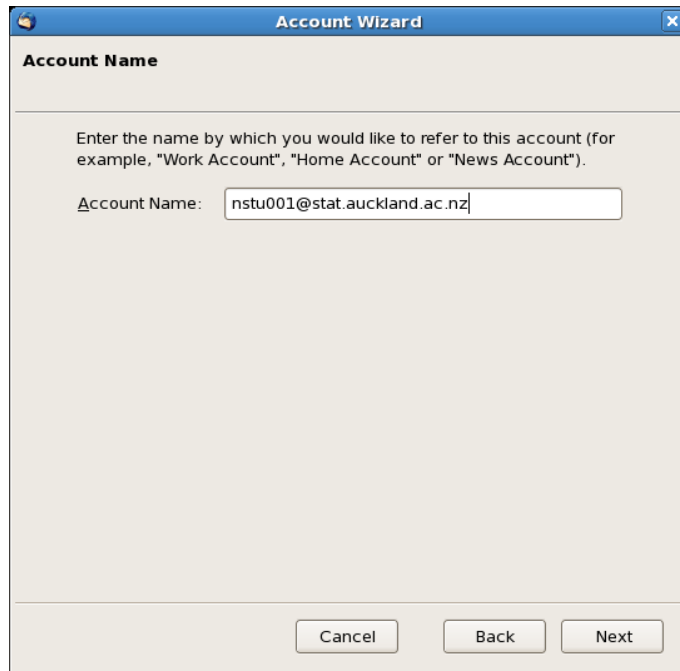


Figure 5: Account Name dialogue box

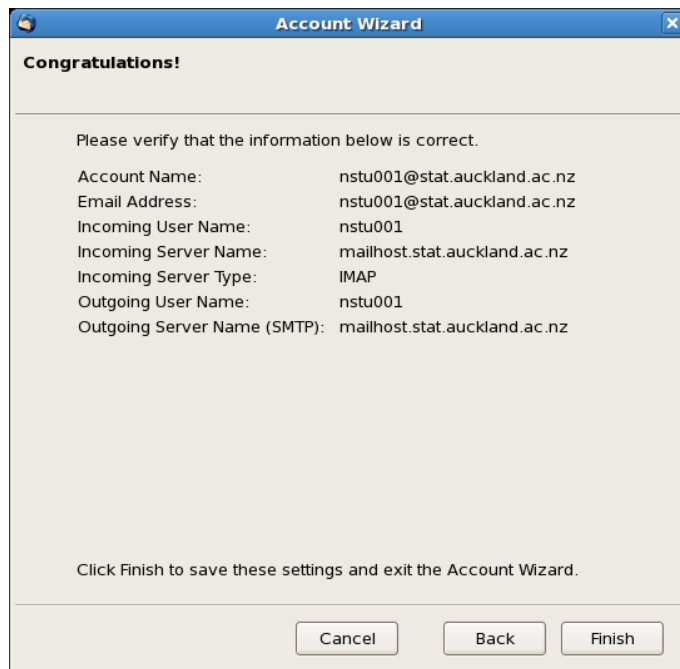


Figure 6: Final dialogue box

### 3 Using the Internet

#### Step 1. Setting Up NetAccount

The University of Auckland maintains a *firewall* which prevents users from obtaining direct access to the Internet. You can start web browsers on computers at the University, but without taking additional steps, you will not be able to view pages outside the University.

To obtain access to the outside world you will need to use *NetAccount*. You can do this by running the `gnetaccount` application. You can do this from a terminal window, but since you will use it often it is convenient to create a button which will launch it. Create a button as follows:

1. Click the right mouse button when the cursor is in the panel at the top of the screen.
2. Select **Add to Panel** from the resulting menu. This will bring up the window shown in Figure 7.



Figure 7: Add to Panel dialogue box

3. Click on **Custom Application Launcher** and then the button marked **+ Add**. This will bring up the **Create Launcher** window which should be filled out as shown in Figure 8. Notice that the name of the command `gnetaccount` has an ampersand (&) after it. Also the **NetAccount** icon has been selected.

This is not necessary but is a sensible idea. To obtain the NetAccount icon, click on the button which initially appears in that location in the window with the text No Icon. This will bring up a window of possible icons. Scroll down and select the NetAccount icon which has the extension .png.

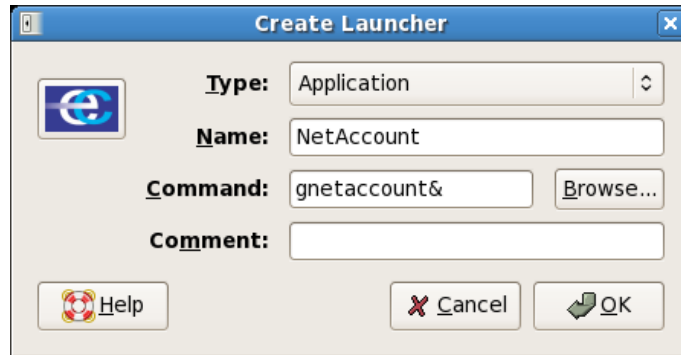


Figure 8: Create Launcher dialogue box

4. Finally click on the OK button. The NetAccount icon will appear on the bar at the top of the screen.

Once you have access to the NetAccount application you will need to go through an authentication process to get access to printing and to the Internet in general. To do this, start NetAccount by clicking on the icon you have just created. This should bring up two windows as shown in Figures 9 and 10. Enter your UPI and

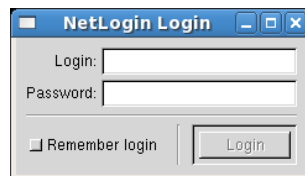


Figure 9: NetLogin Login dialogue box

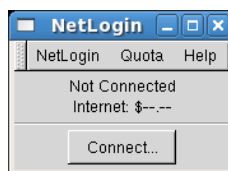


Figure 10: NetLogin status box

NetAccount password in the NetLogin Login dialogue box and click login. Once you are connected to NetAccount, your current internet quota will be shown in the NetLogin status box.

## Step 2. Setting Up the Proxy Server

In addition to setting up NetAccount, you will need to set up your browser so that it uses the Electronic Campus *Internet Proxy Server*. This server keeps a cache of all pages examined by people at the University so that the pages do not need to be fetched anew every time someone asks for them. This can save time and money.

To set up the proxy, start the Mozilla Firefox browser by clicking on the icon which looks like the world as seen from outer space. Once the browser is running, click on **Edit > Preferences** from the menus. Click on the **Advanced** button and then the tab marked **Network**. The window should be as shown in Figure 11. Click on

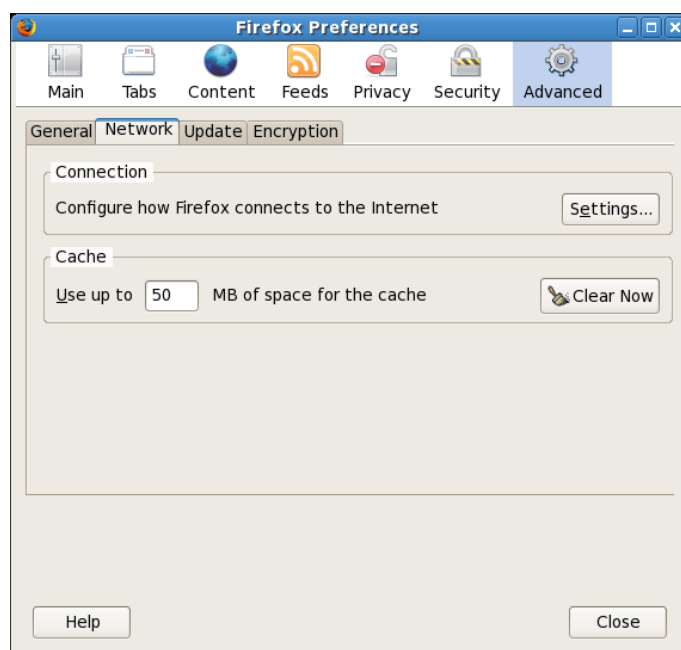


Figure 11: Firefox Preferences window

the settings button and fill out the resulting dialogue box as shown in Figure 12.

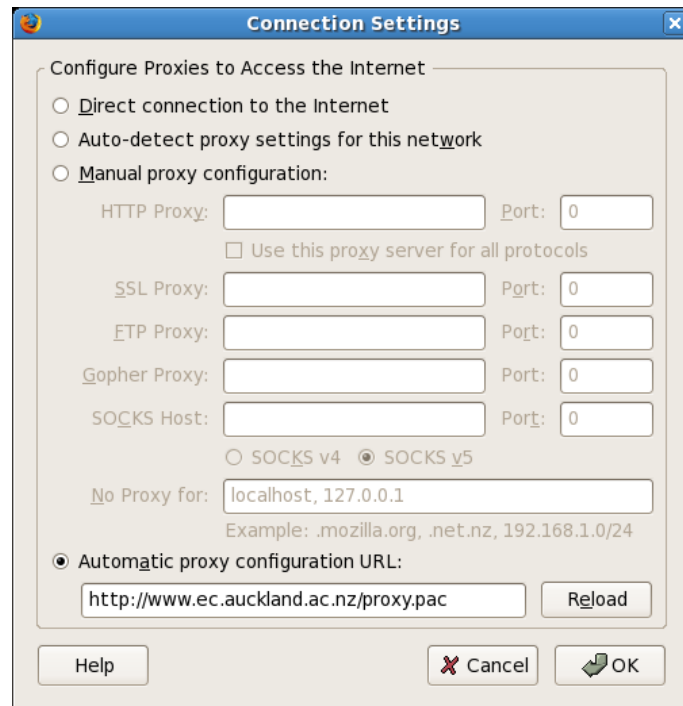


Figure 12: Connection Settings dialogue box

Click on the OK button. You should now be able to connect to the internet via your browser.